



KWANTLEN
POLYTECHNIC
UNIVERSITY

Sustainability Report

Academic Year 2023 – 2024

Prepared by KPU's Office of Sustainability

Land Acknowledgment

We at Kwantlen Polytechnic University respectfully acknowledge that we live, work, and study in a region that overlaps with the unceded traditional and ancestral First Nations territories of the xwməθkwəy̓ə m (**Musqueam**), q̓í cə́ y̓ (**Katzie**), SEMYOME (**Semiahmo**), scə́ wəθən (**Tsawwassen**), q̓iqéyt (**Qayqayt**), and kwikwə́łə́ m (**Kwikwetlem**), and with the lands of the q̓w̓ a:n̓́ ə́ n̓́ (**Kwantlen**) First Nation, which gifted its name to this university.

In the cause of reconciliation, we recognize our commitment to address and reduce ongoing systemic colonialism, oppression, and racism that Indigenous Peoples continue to experience.



Lekeyten - KPU's Elder in Residence

Table of Contents

Land Acknowledgment	1
Foreword	3
Acknowledgments	4
Executive Summary	5
Sustainability & KPU	5
About this Report	5
Summary of Findings.....	7
Setting the Context	12
KPU at a Glance	12
Sustainability & KPU	13
About This Report	15
Our Impact	19
Decolonization & Reconciliation.....	19
Equity & Inclusion	22
Climate Mitigation & Resilience	25
Land Stewardship	33
Campus Operations	37
Transportation & Universal Accessibility.....	42
Education.....	50
Outreach	57
Leadership & Governance	63
Conclusions	68
Key Takeaways	68
Looking Forward	68

Foreword



Dr. Alan Davis

It is with great pride and enthusiasm that I introduce KPU's inaugural institution-wide Sustainability Report. This document stands as a testament to our unwavering commitment to sustainability. In a time marked by unprecedented global challenges, it is imperative that higher education institutions assume a leadership role in fostering sustainable practices. This report reflects our dedication to not only minimizing KPU's impact on the planet, but also inspiring our community to embrace sustainability as a guiding principle in our academics, operations, leadership, and culture, across our campuses.

At KPU, sustainability has been long championed by many individuals and groups, and became an institutional priority in both KPU's 2023 and 2026 strategic visions. Since establishing the Office of Sustainability in 2023, KPU has been working to more formally ingrain it into our entire institutional ethos. This report is a celebration of the work championed by the entire university community over recent years, with a particular focus on this past Academic Year, 2023-2024. It serves as a comprehensive overview of our achievements, challenges, and aspirations as we progress towards a more sustainable KPU.

Through education, cross-departmental collaboration, community engagement, and strategic initiatives, we are fostering a culture of sustainability that we hope transcends the boundaries of our campuses and into our local and global communities. I extend my deepest gratitude to all members of the KPU community who have contributed to our sustainability work. Your tireless efforts, passion, and ingenuity are the driving forces behind our progress. Together, let's continue to lead by example and shape a more sustainable future for generations to come.

Sincerely,

A handwritten signature in dark ink that reads "Alan Davis". The signature is fluid and cursive, with the first name "Alan" and the last name "Davis" clearly distinguishable.

Dr. Alan Davis
President and Vice-Chancellor

Acknowledgments

This Sustainability Report, the first of its kind, was led and authored by the Office of Sustainability. We are grateful to all those who contributed to its creation through data collection, story sharing, reflection, and collaboration. A special thanks to the Sustainability Hub for their guidance and feedback. We appreciate all campus members - administrators, staff, faculty, and students - who have provided input, shared their enthusiasm, and continue to passionately prioritize sustainability in their personal and professional endeavours. Finally, we acknowledge the contributions of our external partners, whose expertise and collaboration have been essential to advancing many of the initiatives highlighted in this report, as well as the following internal groups who have helped advance sustainability at KPU:

Accessibility Committee

Ancillary Services

Campus and Community Planning

Climate+ Challenge

Environmental Sustainability Committee

Equity and Inclusive Communities

Faculty Councils

Facilities Services

Human Resources

Indigenous Student Services

Kwantlen Student Association

Marketing

Natural Spaces Advisory Committee

Office of the Provost

Planning and Accountability

Procurement Services

Research Services

Risk and Security

Social Justice Film Festival organizers

Sustainability Hub

Student Services

Teaching and Learning

United Nations Sustainable Development Goal Champions

University Executive

University's Diversity and Equity Committee (formerly President's Diversity and Equity Committee)

Wild Spaces

Executive Summary

Sustainability & KPU

Kwantlen Polytechnic University's (KPU) campuses and activities occur in a region that overlaps with the unceded, traditional, and ancestral territories of the xwməθkwəyə (Musqueam), qí cá y (Katzie), SEMYOME (Semiahmoo), scə wəθən (Tsawwassen), qiqéyt (Qayqayt), and kwikwəłə m (Kwikwetlem), and with the lands of the qw̓ a:nłə́ n̓ (Kwantlen First Nation), which gifted its name to this university. Located in the South Fraser region of British Columbia's (BC) Lower Mainland, KPU's five campuses include KPU Richmond (Richmond), KPU Langley (Langley), KPU Tech (Cloverdale, Surrey), KPU Surrey (Newton, Surrey), and KPU Civic Plaza (City Centre, Surrey).

Sustainability is a key strategic goal at KPU, reflected in VISION 2026, the KPU2050 Official Campus Plan (KPU2050) and its Sustainability Framework (SF), which envisions a 2050 where sustainability is visible, celebrated, and ubiquitous across KPU's academics, governance, operations, and physical campuses. The framework includes sub-goals and strategic recommendations, forming a comprehensive plan to address ongoing sustainability challenges. KPU has made formal commitments to carbon neutrality and the United Nations (UN) Sustainable Development Goals (SDGs), and is working to advance decolonization, reconciliation, and equity through various initiatives; all guiding a holistic approach to sustainability. Since establishing the Office of Sustainability in 2023, KPU has further integrated sustainability across the institution, with this **inaugural Sustainability Report** serving as a baseline for measuring progress, ensuring accountability, and guiding future actions in response to evolving sustainability priorities.

About this Report

KPU is committed to a holistic approach to sustainability, recognizing the complexity, interrelatedness, and intersectionality of sustainability challenges. This report, which builds upon KPU's Sustainability Framework, is structured into nine interconnected categories: Decolonization & Reconciliation, Equity & Inclusion, Climate Mitigation & Resilience, Land Stewardship, Campus Operations, Transportation & Universal Accessibility, Education, Outreach, and Leadership & Governance. This report emphasizes that our understanding of sustainability is constantly evolving and is influenced by ecological constraints, social equity, and systemic change, requiring continuous adaptation.

This report assesses KPU’s sustainability efforts during the **2023-2024 academic year (AY 23-24)**, using quantifiable indicators to establish a baseline for measuring future progress while acknowledging that not all efforts are currently measurable. In these cases, we have included key project stories, which not only provide valuable context but also showcase meaningful contributions that may not yet be reflected in quantifiable terms. This report uses KPU’s SF as a key reference tool to track progress across many sustainability goals and objectives. This assessment notes alignment with the UN SDGs where applicable, underscoring the university’s commitment to advancing sustainability in a comprehensive and integrated manner.

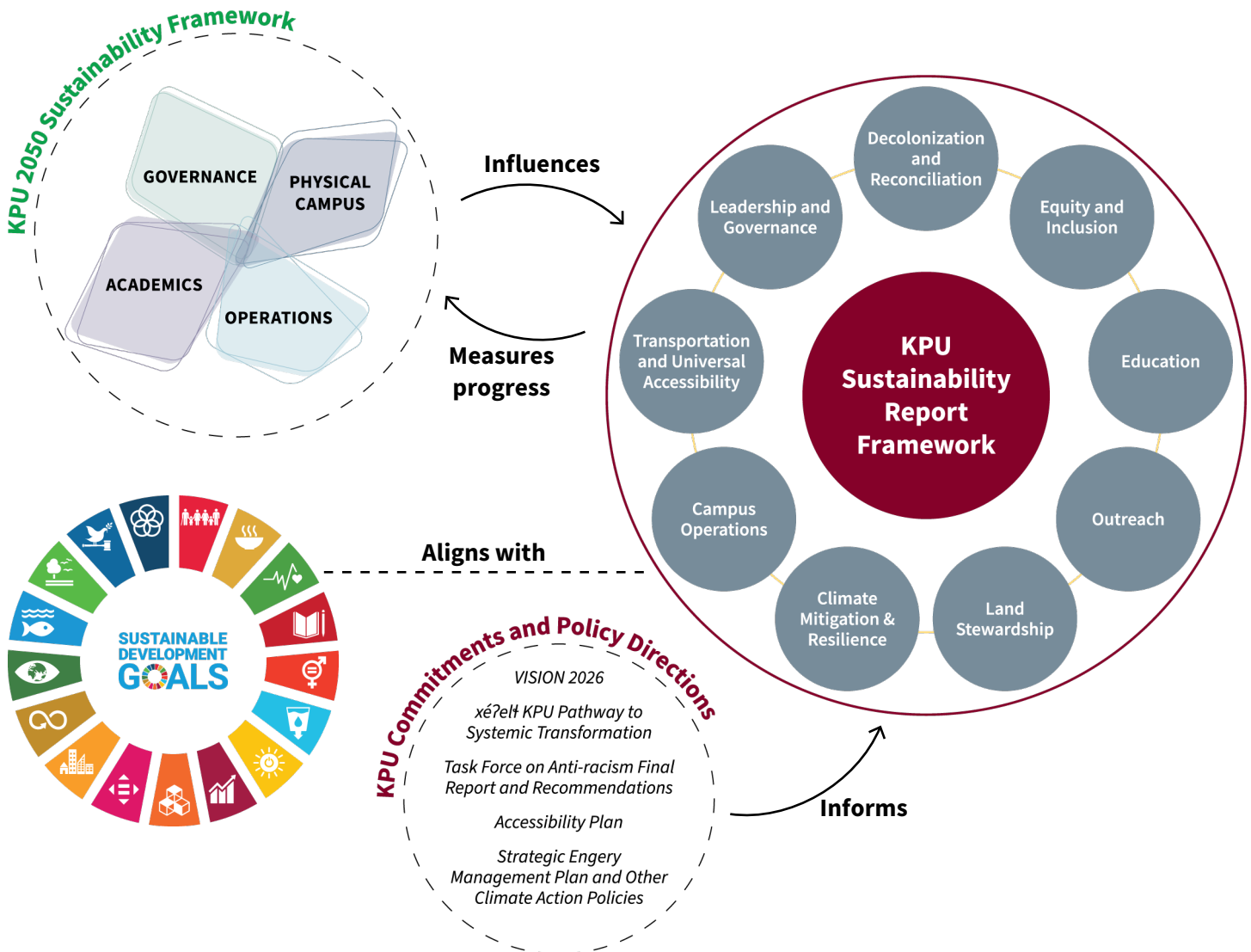


Figure 1: Key strategic inputs into KPU’s Sustainability Report framework include commitments, policy directions, and plans such as VISION 2026 and KPU’s Sustainability Framework. The Sustainability Report aligns with the Sustainable Development Goals and it measures progress on KPU’s implementation of the Sustainability Framework and informs future updates to the Framework.

Summary of Findings

Below is an overview of highlights and a brief summary from the sustainability reporting process, including some key takeaways and emerging themes from **AY 23-24**.

Sustainability Highlights

A snapshot of sustainability performance metrics from AY 23-24 found throughout the report, with the desired trend and and/or target noted (where applicable):

<p>9% reduction in GJ of natural gas burned since 2007 <i>Desired Trend: Decrease</i></p>	<p>78% - Employees 60% - Students Average sustainability quiz score¹ <i>Desired Trend: Increase</i></p>	<p>19% of all courses are related to or focused on sustainability <i>Desired Trend: Increase</i></p>
<p>100+ Climate+ courses self-reported in the Climate+ Challenge inventory <i>Desired Trend: Increase</i></p>	<p>14 preferential carpool parking stalls located at Surrey campus <i>Desired Trend: Increase</i></p>	<p>32% - Employees 74% - Students Take a more sustainable commuting option to/from campus¹ <i>Desired Trend: Increase</i></p>
<p>20 Electric Vehicle Charging Stations across Surrey, Tech, and Richmond campuses <i>Desired Trend: Increase</i></p>	<p>12% reduction in tonnes of CO₂ equivalents in buildings since 2007 <i>Target: 60% by 2030 Desired Trend: Decrease</i></p>	<p>KPU achieved the 50:30 challenge, which seeks gender parity and enhanced diversity at highest governance levels</p>
<p>53.24 KPU's STARS Silver rating (45-64) score <i>Desired Trend: Increase</i></p>	<p>KPU adopted its first Indigenous strategic pathway, xé?elt</p>	<p>118 sustainablekpu Instagram followers <i>Desired Trend: Increase</i></p>
<p>51% Waste diversion rate <i>Desired Trend: Increase</i></p>	<p>82% of the campus community agree engaging in sustainability-related behavior is important to them¹ <i>Desired Trend: Increase</i></p>	<p>All procurement competitions greater than \$75,000 now require suppliers to include environmental, social, and governance (ESG) criteria</p>
<p>KPU celebrated its 10th Annual Social Justice Film Festival</p>	<p>KPU hosted its second annual SDG Week in AY 23-24</p>	<p>71% of students know of and use their U-pass¹ <i>Desired Trend: Increase</i></p>

Decolonization & Reconciliation

To make KPU a more sustainable institution, it is essential to move beyond colonial systems and decision-making. The **xé?elt Indigenous strategic plan**, which upholds Indigenous rights and promotes systemic transformation across the entire university, is a key step in this direction. The **new Indigenous Studies Department** and the **introduction of tuition waivers for Indigenous students** honour long-standing commitments and underscore KPU's dedication to reconciliation. **Dialogues led by Indigenous knowledge-keepers** foster meaningful discussions on decolonization and sustainability. While KPU has made notable progress in formalizing initiatives that support decolonization, there remains a need to more explicitly integrate Indigenous ways of knowing and decolonized approaches into sustainability efforts and to continually improve Indigenous engagement processes. KPU is committed to embedding Indigenous perspectives into its sustainability practices, striving to decolonize its approaches, systems, and initiatives.

Equity & Inclusion

Sustainability necessitates a just and equitable society where all people are included, respected, protected, and provided for; KPU has made progress by highlighting justice and equity as part of its institutional ethos. KPU established the Office of Equity and Inclusive Communities in 2023 to further advance equity and inclusion and has offered dozens of workshops and training on anti-racism, accessibility, and gender equity since its inception.. Recent foundational efforts in this area, such as the **Taskforce on Anti-Racism Recommendations Report and the Accessibility Plan**, will enhance intersectional sustainability at KPU. Further, continued diverse representation across KPU's highest level of governance, as seen through the **achievement of the 50-30 challenge**, will help ensure decision-making at the executive and board level better addresses the needs of the communities KPU serves. Intersectional sustainability is also promoted on-the-ground at KPU, such as during the **10th Annual KDocs Social Justice Film Festival**. KPU is committed to a holistic approach to sustainability that uplifts marginalized voices and provides opportunities for advancements for equity, accessibility, and inclusion.

Climate Mitigation & Resilience

KPU is committed to reducing its greenhouse gas (GHG) emissions in line with its **2050 carbon neutrality goals**. Within KPU's existing greenhouse gas tracking and reporting framework, the upcoming target is 60% GHG emissions reductions by 2030. Since the 2007 baseline, **natural gas use has decreased by 9%** and overall **building greenhouse gas emissions have reduced by 12%**. Although total building emissions have mostly remained the same since 2007, recent mechanical upgrades and continued building optimization have contributed to reductions in greenhouse gas intensity, meaning **less pollution is being produced per square metre of building space despite campus growth**. KPU develops and publishes a **Strategic Energy Management Plan (SEMP)**

annually, supported by BC Hydro's energy management program, to guide its efforts in **energy efficiency and emissions reduction**. KPU is also expanding its climate efforts to include more emissions sources in its greenhouse gas inventory, in order to better track and support efforts to reduce emissions moving forward. Further, KPU has initiated studies to determine strategic next steps in enhancing climate resilience, through a **Preliminary Climate Adaptation Strategy**. Increased momentum, strategic implementation, and dedicated resources in this area will help KPU meet its 2050 carbon neutrality goals and be climate future-ready.

Land Stewardship

KPU is working to weave land stewardship into its principles and practices by adopting an ecosystem-based approach that integrates living systems while aiming to protect, preserve, and enhance the environment across all campuses. Currently, some independent academic and extracurricular programs as well as operational decisions have contributed to raising awareness about land stewardship and have enhanced the health of the local environment. For example, **KPU Wild Spaces** is an interdisciplinary teaching and learning hub that focuses on **ecological place-based education** primarily through nature-walk events. As well, the **Surrey campus central forest ecosystem was enhanced** when unhealthy trees were removed providing space for healthy trees to thrive. While KPU2050 and its Sustainability Framework highlight actions to enhance land stewardship, further work is needed to create specific land stewardship plans, strategies, and policies.

Campus Operations

KPU's operational systems intersect with numerous aspects of sustainability, including water, waste, food, and procurement. Some initiatives have been implemented to reduce waste and water consumption, and emerging streamlined data collection processes are enhancing ongoing tracking in these areas. For example, the **Paper Towel Initiative** has helped divert paper towels from garbage to compost. KPU has been working to support student access to food including donating funds to the KPU Foundation to create a **food security endowment fund** as well as hosting a nutrition month to provide **Food Skills Workshops** and provide grab-and-go breakfasts to numerous students. Students have also spearheaded many initiatives to bolster food security on campus including the **Kwantlen Student Association Food Bank** and the **Westermann Community Gardens**. Additionally, sustainability considerations are increasingly influencing procurement decisions, including **all open and restricted competitions of highest financial value** at KPU. Progress continues to evolve as KPU first focuses on expanding and refining operational systems and procedures.

Transportation & Universal Accessibility

KPU is prioritizing transportation and universal accessibility to reduce greenhouse gas emissions, improve ease of movement, and reduce barriers across its campuses.

All campus buildings have undergone accessibility audits through the Rick Hansen Certification program, including **the Wilson School of Design** that received a **gold standard**. The **proportion of campus members who use more sustainable transportation options** to get to and from campus is **74% for students** and **32% for employees**. KPU currently has some infrastructure that supports sustainable transportation including: **14 preferential carpool parking stalls** on one campus (KPU Surrey), **4 end-of-trip facilities** on two campuses (KPU Surrey and Richmond), **40 weather protected bicycle/micro-mobility lockers** spread amongst four campuses (KPU Surrey, Richmond, Langley, and Tech), **14 Level 1 EV chargers** between two campuses (KPU Surrey and Tech) and **6 Level 2 chargers** on one campus (KPU Richmond). Sustainable transportation has been noted as a **top priority for students and employees**, however, public engagement input indicates that there are gaps in awareness about existing sustainable options available to them and of the negative climate impact of drive-alone vehicles. Raising awareness has already begun through events such as **Thrive Month**, where “environmental wellness” is being promoted, and will be a key strategy going forward.

Education

As a polytechnic university, applied teaching and learning is central to KPU’s educational programming. Applied teaching for sustainability has benefited from the Provost Office’s provisional funding of faculty time releases for continued SDG and Climate+ integration. This past academic year, there were **8 Faculty time releases working on SDG integration** and **over 100 self-reported “climate+” courses**, as a result of these efforts. **60% of academic departments** have at least one sustainability-related or focused course and 19% of all courses at KPU are related to or focused on sustainability. **Over half of students (60%) and over half of employees (71%)** who participated in KPU’s Sustainability Survey agree that they **see a connection between their studies/work and sustainability** at KPU. Many applied sustainability learning opportunities have been organically established by individual faculty members, operated through temporary funding, or are inherent to the program. In part due to these applied learning opportunities, KPU’s course offerings have provided a portion of graduates with an exposure to sustainability education.

Outreach

Momentum towards fostering a culture of sustainability at KPU is evident from in-person and online feedback, such as the Sustainability Survey results, and through direct initiatives like SDG Week and various communications platforms, social media, regular KPU Today posts, and ongoing updates to KPU’s website. Based on the Sustainability Survey, **82% of survey respondents agree that “engaging in sustainability-related behaviour is important** to [them]”. This survey also highlighted strength in knowledge and awareness about sustainability; specifically, **employees scored an average of 78%** and **students scored an average of 60% on**

the sustainability quiz. The survey also provided information about the **top three environmental sustainability priorities** that respondents care about. For all survey respondents (students and employees), the following were selected as the top three: “**Water conservation and quality**” (31%), “**Waste reduction and diversion**” (28%), and “**Sustainable transportation**” (27%). While sustainability-related programs have mainly focused on employees and the broader campus community, it is anticipated that efforts designed specifically to engage students will be explored moving forward. Communication platforms, such as the new **sustainableKPU** Instagram will likely further support increased student engagement. Continued engagement is expected to further build and strengthen a culture of sustainability at KPU.

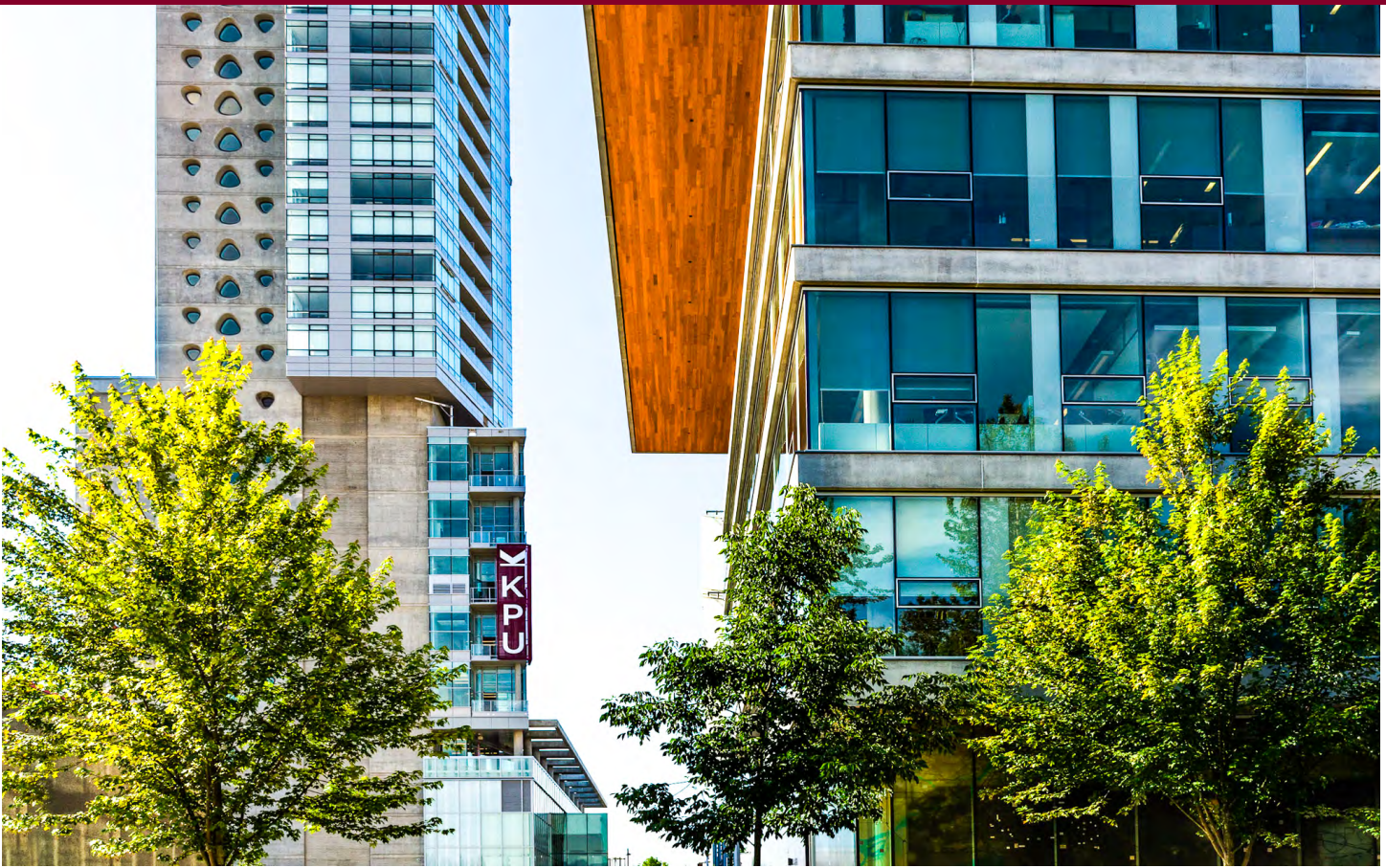
Leadership & Governance

Guided by VISION 2026, KPU2050’s Sustainability Framework, and other key policy directions, the university has taken critical steps to embed sustainability across its systems. Notably, **the Office of Sustainability was established in 2023**, which has been pivotal in **fostering collaboration** through initiatives like the **Sustainability Hub** and in **building numerous foundational systems** essential for KPU to monitor, report, implement initiatives, and guide decision-making to advance sustainability in the years ahead. KPU’s leadership is further demonstrated by its efforts to align with the UN SDGs and its **achievement of a Silver Rating for its first STARS report**. These efforts highlight KPU’s ongoing progress to integrate sustainability across the whole university, setting a strong foundation for future improvements.

Purpose of this Report

This inaugural Sustainability Report highlights KPU’s commitment to sustainability by documenting recent progress and new initiatives. This celebrates our sustainability work, while also creating a baseline assessment from which to track future progress. This assessment has helped us understand where there are currently gaps in quantifiable metrics, and is guiding our efforts to improve our ongoing data collection to better assess our progress moving forward. This report serves as a tool for consolidating information, identifying trends, and will inform future updates to KPU’s Sustainability Framework. It will help refine the SF objectives to be more measurable and specific, ensuring that sustainability efforts are dynamic, accountable, and aligned with best practices. Looking forward, KPU will use this process to enhance its impact and uphold institutional values, continuing to build an accountable and equitable institution.

We invite you to read further to learn more about KPU’s sustainability impact.



Setting the Context

KPU at a Glance

KPU's campuses and activities occur in a region that overlaps with the unceded, traditional, and ancestral territories of the xwməθkwəy̓ə (Musqueam), qí cə y̓ (Katzie), SEMYOME (Semiahmoo), scə wəθən (Tsawwassen), qiqéyt (Qayqayt), and kwikwəł̓ə m (Kwkwetlem), and with the lands of the q̓w̓ ɑ:nł̓ə n̓ (Kwantlen First Nation), which gifted its name to this university. Located in the South Fraser region of British Columbia's (BC) Lower Mainland, KPU's five campuses include KPU Richmond (Richmond), KPU Langley (Langley), KPU Tech (Cloverdale, Surrey), KPU Surrey (Newton, Surrey), and KPU Civic Plaza (City Centre, Surrey). KPU's campuses have state-of-the-art facilities including high-tech labs, studios, classrooms, facilities, and unique experiential learning classrooms such as horticulture greenhouses and university farmland. KPU offers a wide variety of bachelor's degrees, associate degrees, diplomas, certificates, and citations in more than 140 programs. Originally formed in 1981 as Kwantlen College and becoming a degree-granting university college in 1995, KPU became a polytechnic university in 2008. Now, with more than 20,000 students annually, we are proudly Canada's only polytechnic university, focusing on hands-on skills in addition to traditional academics.

Sustainability & KPU

Sustainability is a strategic goal at KPU, outlined in the university's strategic plan, [Vision 2026](#), as well as the Official Campus Plan, [KPU2050](#), and its [Sustainability Framework](#). Published in 2021, the Sustainability Framework was KPU's first official endeavour to formalize a holistically sustainable KPU. The Sustainability Framework envisions a KPU in 2050 where all campuses are carbon neutral and sustainability is visible, celebrated, and ubiquitous across four domains: academics, governance, operations, and physical campuses. The Sustainability Framework's domains are supported by sub-goals, which are areas of opportunity for on-going work or improvement. Each sub-goal has a variety of strategic recommendations, which together form a comprehensive Sustainability Framework. As a document intended to highlight changing sustainability challenges and evolving institutional priorities, this Sustainability Report will help inform future updates to KPU's Sustainability Framework and other guiding policy documents.

Before and since publishing the Sustainability Framework, the university community has worked collectively to embed sustainability within KPU's academics, governance, operations, and physical campuses. At a higher level, this encompasses commitments by KPU to address societal demands and respond to both longstanding and emerging issues, including the myriad of interconnected sustainability crises. For example, KPU is a signatory of the [Global Universities and Colleges Climate Letter](#) committing to achieve carbon neutrality by 2050. This complements the provincial government's requirements and KPU's own carbon neutrality goals outlined in the *Sustainability Framework*. Further, this aligns with KPU's yearly energy savings goals outlined in KPU's annual *Strategic Energy Management Plan*². KPU is committed not only to mitigating climate change, but also adapting to climate risks, as observed in KPU's [Preliminary Climate Adaptation Strategy](#). KPU has also signed the [Sustainable Development Goal \(SDG\) Accord](#) committing to inspire, celebrate, and advance the critical role education has in delivering the SDGs.

Holistic sustainability is further advanced through KPU's work advancing decolonization and reconciliation by formally responding to the [Calls to Action](#) outlined by the Truth and Reconciliation Commission of Canada, by signing the [Indigenous Education Protocol](#), and through KPU's Indigenous strategic plan, [xé?elt - KPU Pathway to Systemic Transformation](#). In addition, KPU has committed to anti-racism and equity, diversity, and inclusion through the [Task Force on Anti-racism Final Report and Recommendations](#), the [Accessibility Plan](#), the [Scarborough Charter](#), and [the 50-30 Challenge](#). These commitments and policy directions provide a foundation guiding holistic sustainability efforts at KPU.

The Office of Sustainability, established in 2023, connects, coordinates, communicates, supports, and fosters collaboration to advance sustainability at KPU. Recognizing that sustainability is a shared responsibility of the entire university community, as outlined

in VISION 2026, the Office of Sustainability is working to equip all community members to take meaningful action. Since establishing the Office of Sustainability, KPU has taken additional strides to more formally integrate sustainability across the university. One way KPU is achieving this is through this Sustainability Report, a first of its kind, as a way to establish a baseline understanding of sustainability at KPU, from which we will be able to monitor and measure our future progress.

What does holistic sustainability mean at KPU?

Sustainability means conducting all activities in such a way that fosters environmental health, social justice, and economic responsibility. KPU recognizes that human society and the economy are wholly encompassed by and inherently dependent on a healthy environment and the ways we care for the Earth.

For all life forms to flourish, now and in perpetuity, it is paramount that Indigenous worldviews are integrated into sustainability practice. Indigenous peoples – the original stewards of the land – offer invaluable insights and perspectives rooted in generations of co-existence and reciprocity with nature.

KPU is committed to a holistic, forward-looking, and ethical approach to navigating the complexity, interrelatedness, and intersectionality of sustainability challenges. We acknowledge that sustainability is an ongoing, collective responsibility that requires collaborative action and accountability for the impact of all our activities. Together, we will listen, learn, and act as stewards of the land and our communities.



About This Report

This Sustainability Report showcases KPU's efforts towards addressing and implementing the recommendations of the Sustainability Framework and the aforementioned related commitments and policy directions, as well as capturing the evolving sustainability landscape at KPU and beyond. This report will serve to measure progress year over year and ensure accountability to the university's communities and the impact of institutional activities.

Report Structure

KPU is working to establish a holistic approach to sustainability. This report was intentionally crafted to acknowledge the complexity, interrelatedness, and intersectionality of sustainability challenges. As a principle and practice, sustainability is ever-evolving, influenced by ecological constraints, social equity considerations, and the need for systemic change. This necessitates continuous adaptation by organizations to address these complexities and modify approaches in response.

As such, this report expands upon the content of the Sustainability Framework as an evolution of holistic sustainability at KPU, and is structured into **nine broad sustainability categories**: “Decolonization & Reconciliation”, “Equity & Inclusion”, “Climate Mitigation & Resilience”, “Land Stewardship”, “Campus Operations”, “Transportation & Universal Accessibility”, “Education”, “Outreach”, and “Leadership & Governance”. While organized into distinct categories for ease of understanding, the content presented within each category should not be perceived in isolation; rather, it should be recognized as interconnected and mutually supportive.

The first section of this report, “**Decolonization & Reconciliation**”, aims to ground this work in Indigenous ways of knowing, being, and doing. Many Indigenous worldviews emphasize that land – including air, water, and soil - is integral to culture, ecosystems, governance, relationships, and spirituality, underscoring a collective responsibility to care for the land. This embodies the notion of sustainability, in principle and practice, that humans are a part of and inseparable from nature and that human systems are wholly encompassed by the environment.

The impacts of colonialism, environmental racism, exploitation, and extractivism, occurring locally and globally, affect marginalized groups disproportionately, as they are least responsible for sustainability crises yet are most vulnerable to their impacts. To acknowledge this, the report's second section focuses on “**Equity & Inclusion**” as a means of centering anti-racism, justice, diversity, gender and sexual equity, and inclusion as being key to intersectional sustainability.

“**Climate Mitigation & Resilience**” and “**Land Stewardship**” are discussed thereafter to recognize the “twin crises” of climate change and biodiversity loss. The report moves on to “**Campus Operations**” and “**Transportation & Universal Accessibility**”

given their critical interrelations with climate change and biodiversity, as well as their more granular focus. These first six categories are foundational in understanding the current state of sustainability at KPU and provide the basis for sustainability-related academic programming and community engagement in a polytechnic setting, laying the groundwork for “**Education**” and “**Outreach**” to build upon. “**Leadership & Governance**” is the final category to call attention to the critical role of KPU in addressing sustainability now and in the future.

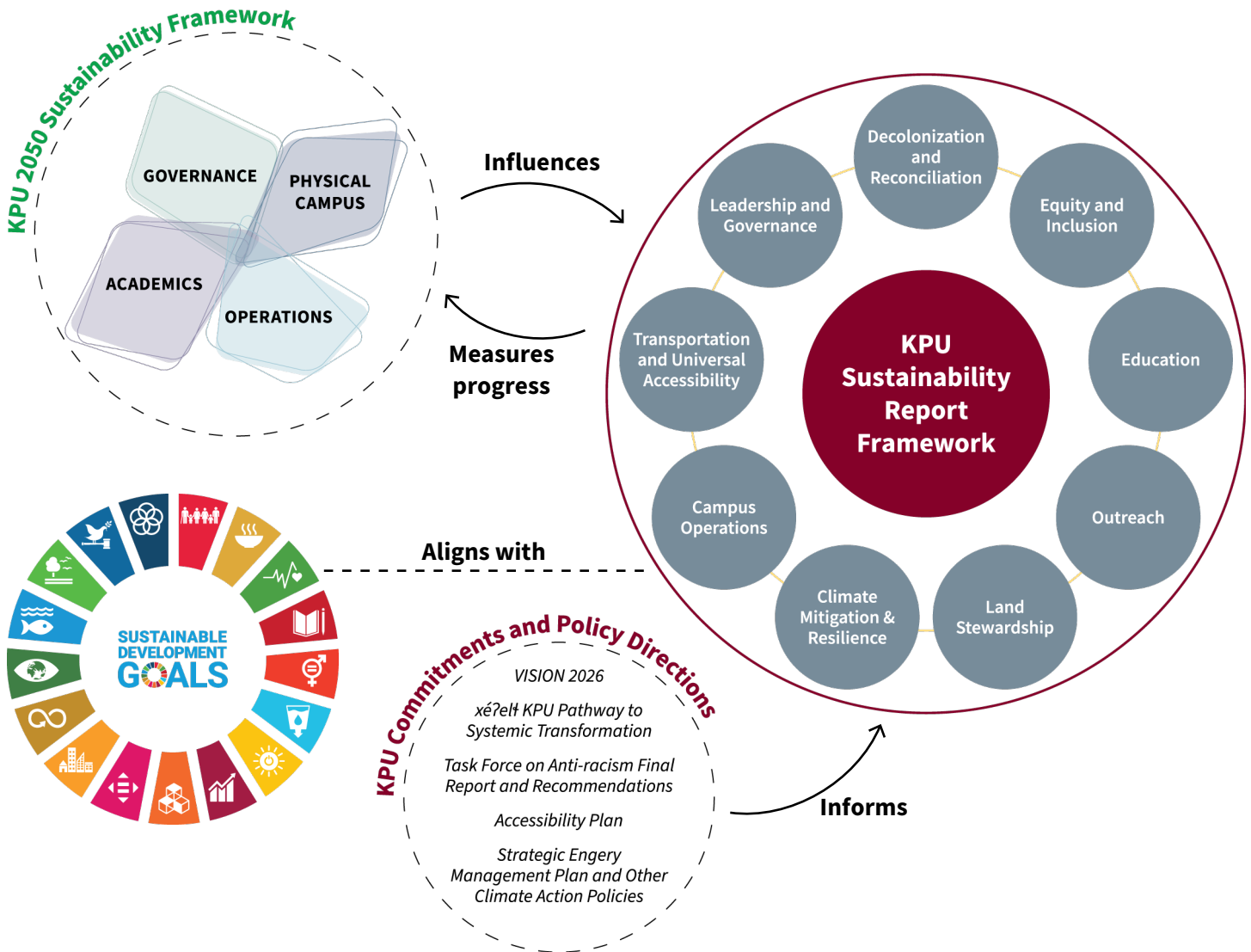


Figure 2: Key strategic inputs into KPU’s Sustainability Report framework include commitments, policy directions, and plans such as VISION 2026 and KPU’s Sustainability Framework. The Sustainability Report aligns with the Sustainable Development Goals and it measures progress on KPU’s implementation of the Sustainability Framework and informs future updates to the Framework.

Scope

This report aims to capture the numerous contributions of individuals, groups, offices, and departments who have put forth sustainability efforts during **AY 23-24**. In some cases, ongoing initiatives that were initiated in previous academic years are included given this is the inaugural report. These contributions are captured through **quantitative indicators** and **key project stories** throughout all nine categories. Quantitative indicators will expand as data collection processes are refined to show trends over time. Rather than providing an exhaustive inventory of all sustainability initiatives across the university, the intent has been to use the information currently available to take stock of KPU's present state, which will serve as a starting point upon which to build in succeeding years.

Assessment of Performance

This report aims to track progress over time. As a starting point, progress has been assessed using KPU's Sustainability Framework. The objectives set out in the Sustainability Framework were assessed at a high-level according to five benchmarks: "complete", "significant progress", "progress in the right direction", "unclear", and "no progress".

	Complete
	Significant progress
	Progress in right direction
	Unclear
	No progress

The objectives and their benchmark ratings are displayed at the beginning of the most closely related Sustainability Report category sections, to provide a general understanding of KPU's progress implementing the Sustainability Framework. The objectives are denoted using "SF" along with their associated numbering in the Sustainability Framework document. As KPU continues to track progress over time and develops an updated version of its Sustainability Framework, a more comprehensive progress assessment will be conducted. See **Appendix 1** for a detailed list of all Sustainability Framework objectives shown against the above benchmark ratings.

Connection to Sustainable Development Goals

Each Sustainability Report category section also identifies the most closely related **Sustainable Development Goals** (SDG) by showing the SDG icons. Similar to the Sustainability Framework's objectives, the SDG icons shown are those where the strongest connections to that particular category are observed. For reference, the full list of SDGs and associated icons is provided below.



SUSTAINABLE DEVELOPMENT GOALS



Sustainability Survey Participation

Response Rate:

Employees — 24%
Students — 16%

Total Number of Respondents:

475 Employees
1,160 Students

Example Survey Callout:

Sustainability Survey

These boxes link data from the Sustainability Survey with the content in each section.

Sustainability Survey Findings

In February 2024, KPU undertook its first **Sustainability Survey**, which gathered information from employees and students about sustainable behaviours, habits, knowledge, and awareness. This survey aimed to assess the KPU community’s understanding of sustainability, including the role of sustainability in everyday decision-making; the use of specific services at KPU; and the community’s transportation choices to, from, and between campuses. A sustainability quiz was also administered to understand the level of awareness of sustainability topics at KPU and within Metro Vancouver, including climate change, responsible production and consumption, and society and economy. The findings from this survey are referenced throughout this report using call-out boxes, as **highlighted in the example below**. Many of these include quantitative metrics that help create a baseline for KPU to measure progress over time. Some call-out boxes show data from the survey that asked respondents the level at which they agree to a certain statement. The levels included “Strongly disagree”, “Somewhat disagree”, “Neither agree nor disagree”, “Somewhat agree”, and “Strongly agree”. Unless specified, agreement categories have been combined (e.g. “agreed” includes both “strongly agree” and “somewhat agree”). More information about the 2024 Sustainability Survey is found under “**Fostering a Culture of Sustainability**” in the Outreach category.

Our Impact

Decolonization & Reconciliation

Sustainability Framework Performance Assessment	
SF 3.2.1	President's Diversity and Equity Committee (PDEC) ³ and Indigenous Advisory Committee (IAC)
SF 3.2.2	Diversity, Equity, and Truth and Reconciliation ⁴
SF 4.2.2	Indigenous Learning Opportunities



Sustainability at KPU cannot be realized without centering Indigenous ways of knowing, being, and doing, in both principle and practice. Understanding how KPU can become a more sustainable institution requires thinking and acting beyond colonial systems and decision-making. The following key project stories highlight how KPU is working towards decolonization and reconciliation and working to change the ways we understand, practice, and teach sustainability.

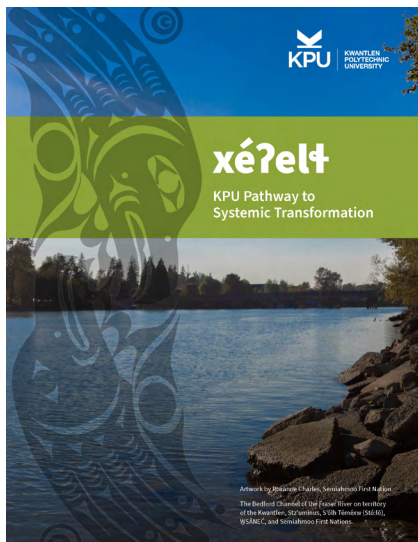


Image Description: xé?el̓t cover page. Artwork created by Roxanne Charles from the Semiahmoo First Nation. Image overlooking the Bedford Channel of the Fraser River on territory of the Kwantlen, Stz'uminus, S'ólh Téméxw (Stó:lō), W̱ SÁNEĆ, and Semiahmoo First Nations.

xé?el̓t - KPU Pathway to Systemic Transformation

xé?el̓t - KPU Pathway to Systemic Transformation, KPU's Indigenous strategic plan, is the first of its kind at KPU. Developed by Indigenous Student Services in consultation with KPU's Indigenous Advisory Committee, faculty, staff, and students, xé?el̓t was officially launched on June 20, 2023. This report encourages a shift in culture at KPU where the responsibility of systemic transformation is shared among the entire KPU community to recognize and advance the rights of Indigenous Peoples. It is KPU's response and commitment to upholding the responsibilities expressed through the Truth and Reconciliation Commission of Canada's Calls to Action; the Calls for Justice stemming from the Nation Inquiry into Missing and Murdered Indigenous Women, Girls, and 2SLGBTQIA+ people; and the United Nations Declaration on the Rights of Indigenous Peoples.

³The **President's Diversity and Equity Committee (PDEC)** has been renamed to the University's Diversity and Equity Committee (UDEC) since publishing the Sustainability Framework. This will be reflected in the update to the Sustainability Framework.

⁴**Updating the Sustainability Framework:** In the next version of the Sustainability Framework (SF), it will be updated to reflect the evolving field of sustainability and incorporate best practices, lessons learned, and data collected during the creation of this Sustainability Report. SF3.2.2 is an example of this as it currently combines Diversity, Equity, and Truth and Reconciliation into a single objective. While enhancing diversity and equity for Indigenous Peoples can contribute to advancing reconciliation, it is crucial to separate these elements to specifically emphasize the distinct significance of "Diversity and Equity" and "Truth and Reconciliation". At KPU, Indigenous Services is a separate department from the Office of Equity and Inclusive Communities.

Tuition Waiver Program for Eligible Indigenous Students

In June 2023, KPU announced it will waive tuition fees for eligible Indigenous students as part of its commitment to advancing Truth and Reconciliation. In Fall 2023, the university began waiving tuition for incoming and current KPU students who are members of KPU's Host Nations, the Kwantlen, Katzie, Semiahmoo, Musqueam, Tsawwassen, Qayqayt, and Kwikwetlem First Nations. Education, and the opportunities it can provide, are fundamental to reconciliation. KPU is the first post-secondary institution in the province of BC and the second in Canada to introduce such a tuition waiver program.

Indigenous Studies Department

On September 28, 2023, KPU officially launched the new Indigenous Studies Department with a celebration featuring Indigenous artists, performers, and speakers. The creation of this department fulfills a promise made by the university 40 years ago, when Joe Gabriel, the late grand chief of the Kwantlen First Nation, gave the university its name. This department offers classes exploring content including, but not limited to, Indigenous histories, cultures, worldviews, and governance, as well as the impact of past, current, and ongoing colonialism. The department will need to continue to expand in order to support progress along the pathways of *xé?el̓t*.

New Moon Gala

On January 11, 2024, KPU hosted the university's first annual New Moon Gala to raise funds for Indigenous student scholarships. The gala welcomed former B.C. Lieutenant-Governor and recently appointed Officer of the Order of Canada the Honourable Steven Point, as a special guest speaker, and included a showcase of Indigenous performances and a silent auction, with all proceeds from bids supporting Indigenous scholarships.

Indigenous Dialogue Series

Originally launched in 2020, the Indigenous Dialogue Series hosts Indigenous scholars, activists, and leaders each year for meaningful dialogues bringing together all members of the KPU community and the general public, including Indigenous Peoples and settlers. From 2023-2024, speakers included Dr. Lorna Williams, Verna St. Denis, and Kahérakwas Donna Goodleaf. Dr. Lorna Williams spoke about Indigenous language revitalization by using traditional teaching and learning practices. Verna St. Denis' talk brought perspectives on her research and scholarship on anti-racist and Indigenous education. Kahérakwas Donna Goodleaf's workshop unpacked and examined what decolonizing and Indigenizing curriculum and pedagogy means within the context of university programs.



Braiding Sweetgrass with Robin Wall Kimmerer

KPU hosted a webinar with Robin Wall Kimmerer, author of *Braiding Sweetgrass*, as part of **Provost Presents** in February 2024. Provost Presents give the campus community an opportunity to hear from experts in higher education about timely, compelling issues that are pertinent to work and study in academia. Robin Wall Kimmerer is a member of the Citizen Potawatomi Nation, a decorated professor, and a botanist. Using two-eyed seeing, Kimmerer has been trained to ask questions of nature with the tools of science. In this thought-provoking webinar, Kimmerer asked listeners, “What does the Earth ask of us?”, and encouraged them to consider what humans can learn from our non-human relatives. Taking listeners on a journey to reflect on our own relationships with how we care for Mother Earth, Kimmerer generously shared her passion and wisdom about humanity’s need to change.

Equity & Inclusion

Sustainability Framework Performance Assessment	
SF 3.2.1	President's Diversity and Equity Committee (PDEC) ⁵ and Indigenous Advisory Committee (IAC)
SF 3.2.2	Diversity, Equity, and Truth and Reconciliation ⁶



Sustainability necessitates a just and equitable society where all people are included, respected, protected, and provided for. This imperative becomes more pressing given that marginalized groups disproportionately suffer from the negative impacts of sustainability crises. The following key project stories highlight how KPU is working towards addressing equity and inclusion and contributing to intersectional sustainability.

Task Force on Anti-Racism Final Report & Recommendations

In October 2022, KPU's Task Force on Anti-Racism (TFA) launched its **Final Report and Recommendations**, which confirms that historic and ongoing racism exists within and beyond KPU. The report contains 64 recommendations to support KPU in its goals to foster anti-racism; strengthen awareness and understanding of race, racism, and anti-racism among employees and students; and address systemic barriers to full participation in the KPU community. The Office of Equity and Inclusive Communities (OEIC) is actively working on the implementation of the recommendations of the TFA report.



⁵The President's Diversity and Equity Committee (PDEC) has been renamed to the University's Diversity and Equity Committee (UDEC) since publishing the Sustainability Framework. This will be reflected in the update to the Sustainability Framework.

⁶Updating the Sustainability Framework: In the next version of the Sustainability Framework (SF), it will be updated to reflect the evolving field of sustainability and incorporate best practices, lessons learned, and data collected during the creation of this Sustainability Report. SF 3.2.2 is an example of this as it currently combines Diversity, Equity, and Truth and Reconciliation into a single objective. While embracing diversity and equity for Indigenous Peoples can contribute to advancing reconciliation, it is crucial to separate these elements to specifically emphasize the distinct significance of "Diversity and Equity" and "Truth and Reconciliation". At KPU, Indigenous Services is a separate department from the Office of Equity and Inclusive Communities.



Image Description: Dr. Jasmin Zine, Keynote Speaker of the Anti-Racism Symposium.

Anti-Racism Symposium

Led by the OEIC, KPU hosted its second annual Anti-Racism Symposium in March 2024, responding to the recommendation to “[e]stablish an ‘Anti-Racism at KPU’ Day to have an annual full-day symposium to discuss and encourage confronting racism and to share internal and external research, scholarship, and creativity on racism/anti-racism”. In conjunction with the International Day for the Elimination of Racial Discrimination, this thought-provoking event, with keynote speaker Dr. Jasmin Zine, encouraged participants to have difficult conversations about and critically reflect on Islamophobia, unconscious bias, overt racism, white privilege, and white settler colonialism and how they manifest in higher education institutions and beyond.

Accessibility Plan

In October 2023, in response to the Accessible BC Regulation, KPU launched its first Accessibility Plan. The plan seeks to address identified barriers to inclusion and accessibility for individuals with disabilities at KPU across seven categories, ranging from, but not limited to, behaviours, assumptions, attitudes, and perceptions to organizational barriers. Beyond research and data synthesis, this plan was informed by the direct experiences of students and employees with disabilities who serve on KPU’s Accessibility Committee. These recommendations aim to promote a more accessible and inclusive environment at KPU.

As KPU advances its sustainability practices, it is important to recognize that sustainability and accessibility are interdependent. As KPU takes steps towards more sustainable transportation or building systems, for example, we will not achieve real sustainable change if we are not considering equity and social inclusion as well. A true commitment to sustainability requires a holistic approach because only when both sustainability and accessibility are equally weighted can we shape a community for everyone.

– Alexandra Taylor, Office of Sustainability staff, Accessibility Committee member, and KPU alumna

50-30 Challenge

KPU is a signatory to the Canadian federal government’s 50-30 Challenge, which seeks gender parity on boards and in senior management. It also seeks a minimum of 30% representation from people who identify as Indigenous, racialized, having a disability, or a member of the 2SLGBTQIA+ community. This academic year, KPU met the challenge by having collectively 30% of people within senior management (Deans, Executive Directors, Associate Vice Presidents, and University Executive) who identified as Black, Indigenous, and People of Colour (BIPOC); having a disability; or being a part of the 2SLGBTQIA+ community. Within KPU’s Board of Governors, there was a 50:50 gender split, with 90% identifying as BIPOC. KPU is committed to increasing diversity in senior leadership roles and on its board.



Image Description: Victoria Thomas, Keynote Speaker of KDocsFF, sharing her film KOKOMO CITY.

Social Justice Film Festival

KDocsFF, Metro Vancouver’s premier social justice film festival, hosts thought-provoking documentaries, engaging panel discussions, and vibrant exhibitors’ halls. Showcasing powerful stories that inspire, inform, and challenge perspectives, KDocsFF stands at the forefront of documentary activism, fostering a space where both individual and collective voices are championed and where exploration and empowerment intersect.

KDocsFF began as a single film night at KPU’s Surrey campus in 2012. Now, it is widely recognized as a world-class social justice film festival adored by filmmakers, film subjects, and filmgoers as a celebration of documentary film and documentary activism.

These hard-earned achievements are no small feat, especially given what it took to make them possible: two very dedicated faculty members with initiative, tenacity, and unrelenting diligence; over a decade of cultivating, building, and sustaining relationships on and off campus; numerous helping hands, hearts, and minds; endless applications, phone calls, and negotiations to acquire \$500,000 in funding; curating and arranging to show over 150 films; the support of 16,000 guests; and an “unwavering spirit that just doesn’t quit” (Janice Morris, KDocsFF Founder and Festival Director). The success of KDocsFF serves both as a testament to the team’s passion and determination and as an incitement to create systems and processes that enable such initiatives.

Journeys in Solidarity

This year’s festival in February 2024, Journeys in Solidarity, celebrated KDocsFF’s 10th anniversary. It was a curation of 15 feature-length documentaries and four short documentaries relating to Indigenous rights and governance, decolonization, racial justice, mental health, disability, body image, extractivism, environmental stewardship and sustainability, gendered violence, 2SLGBTQIA+ rights, democracy, journalistic freedoms, and more.



Image Description: Shubham Chhabra receiving the KDocsFF Best Emerging Filmmaker Residency Prize from Greg Chan, English instructor at KPU and co-director of KDocsFF.



Image Description: Panel discussion after the film *Powerlands* at KDocsFF 2024, the festival’s 10th anniversary. Sitting from left to right: Melinda Bige, Cease Wyss, Ivey-Camille Manybeads Tso, Angel Brant, Miranda Dick. Missing from photo: Andrea Costa.

I am proud that our programming embodies intersectional social justice, with all of the documentaries we screen and the events we produce centering anti-oppression, sustainability, human and animal rights, resistance, and diversity.

– Greg Chan, KDocsFF Community Outreach Director and English instructor

Climate Mitigation & Resilience

Sustainability Framework Performance Assessment	
SF 5.1.1	Zero Emissions Commitment
SF 5.1.2	Phased Electrification of Existing Building Systems
SF 5.1.3	Embodied Emissions
SF 5.1.4	Sustainable Building Design Guidelines and Performance Rating Systems
SF 5.1.5	Renewable Energy
SF 5.1.6	Resilience



As a post-secondary institution of BC, KPU is mandated under the provincial **Carbon Neutral Government Regulation** (CNGR) to annually report and offset operational greenhouse gas emissions with stepped targets according to a 2007 baseline. These provincial targets apply to emissions sources included in the following inventory categories, measured in tonnes of carbon dioxide equivalents (tCO₂e)⁷:

- » Scope 1, including direct fuel combustion (e.g. natural gas used in buildings) and mobile energy use (e.g. vehicle fleet - owned);
- » Scope 2, including purchased energy (e.g. purchased electricity);
- » Scope 3, including from office paper use.

To further advance KPU’s commitment to carbon neutrality by 2050, the Sustainability Framework outlines stepped targets that align with the emissions sources and 2007 baseline of the CNGR while adopting a more ambitious timeline. In addition, KPU has committed to the UN Environment Programme’s “Race to Zero” target of net zero greenhouse gas emissions by 2050.

⁷tCO₂e” stands for tonnes of carbon dioxide equivalents. It is a standardized unit of measurement used to express the total greenhouse gas emissions in terms of their impact compared to carbon dioxide (CO₂). Since different greenhouse gases have different effects on climate change, tCO₂e, allows for easy comparison by converting their impacts into an equivalent amount of CO₂. This helps to understand the overall contribution of various greenhouse gases to climate change by allowing a comparison of their impact.

British Columbia's Carbon Neutral Government Regulation (CNGR) Targets:

By 2030: 40% below 2007 tCO₂e levels
 By 2040: 60% below 2007 tCO₂e levels
 By 2050: 80% below 2007 tCO₂e levels

Sustainability Framework (SF) Carbon Neutrality Targets:

By 2030: 60% below 2007 tCO₂e levels
 By 2035: 70% below 2007 tCO₂e levels
 By 2040: 80% below 2007 tCO₂e levels
 By 2045: 90% below 2007 tCO₂e levels
 By 2050: 100% below 2007 tCO₂e levels

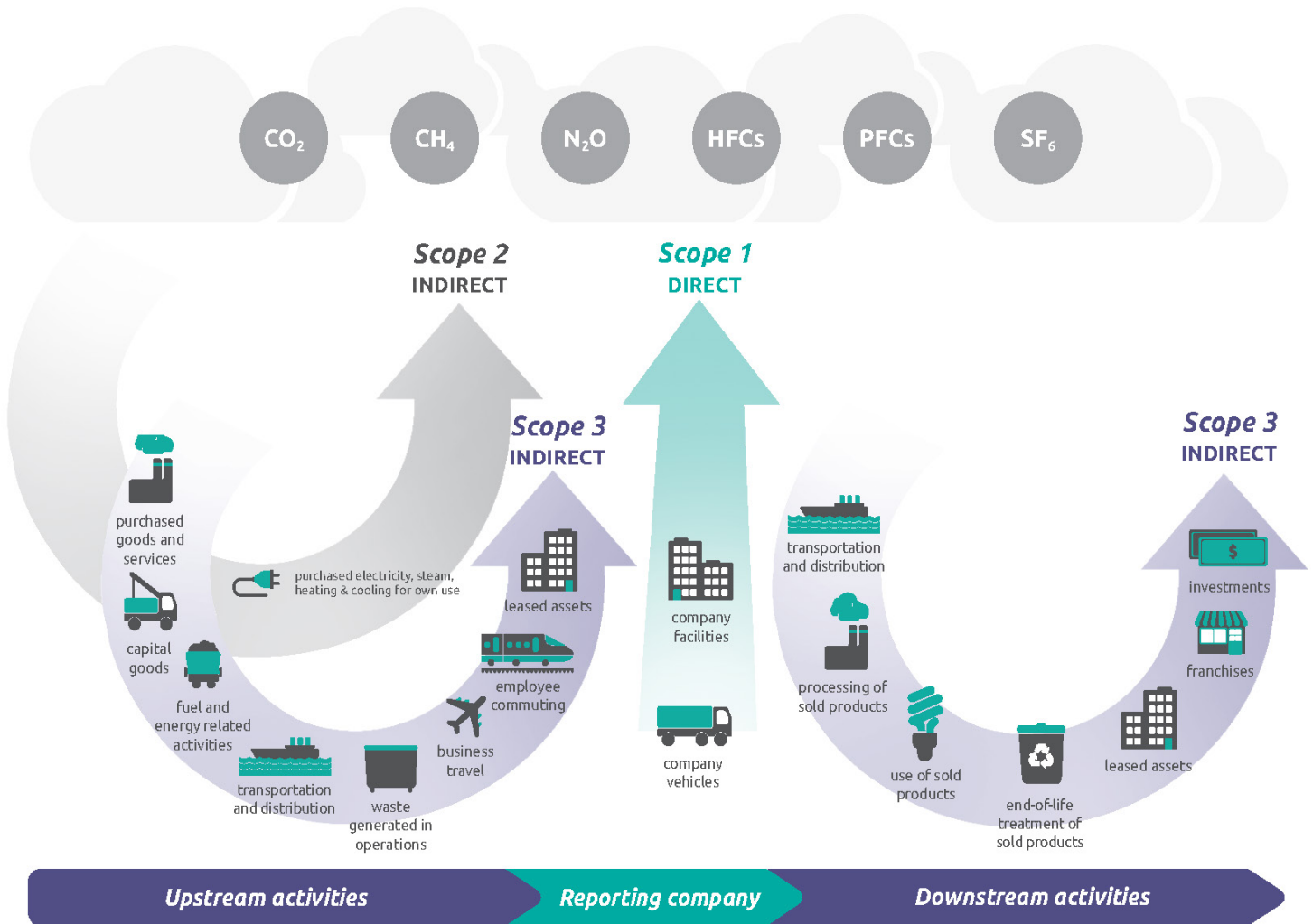


Image Description: Comparison of the greenhouse gas emissions categories (“Scopes” 1, 2, and 3) and their common emissions source types, as defined by the globally recognized **GHG Protocol**.

	Scope	Emissions Source	GHG Emissions (tCO ₂ e)
Included in B.C.'s CNGR and KPU's SF targets	Scope 1 — Direct	Natural Gas — Buildings	2,243
		Vehicle Fleet (KPU-owned)	37
	Scope 2 — In-direct	Purchased Electricity — Buildings	140
	Scope 3 — In-direct	Office Paper	38
Total GHG emissions according to CNGR and SF			2,458

Not currently included in B.C.'s CNGR nor KPU's SF targets	Scope 3 — In-direct	Commuting (Employees and Students)	8,591
		Intercampus Shuttle (Leased)	70
Total GHG emissions from all sources currently measured and included in inventory			11,119

Table 1: KPU's GHG Inventory. This table shows the breakdown of emissions sources that are included in KPU's carbon neutral stepped targets (CNGR and SF), as well as those that are excluded from these stepped targets. This table also shows the breakdown of KPU's emissions based on their "Scope". Totals are shown for the carbon neutral stepped targets and the overall greenhouse gas emissions from all sources currently measured at KPU.

Upcoming Target: 60% by 2030

KPU has reduced its emissions by 252 tCO₂e (9%) since 2007. In order to reach the Sustainability Framework stepped target of 60% below 2007 emissions, KPU needs to reduce its annual greenhouse gas emissions by at least 1,374 tCO₂e by 2030 (2007 baseline= 2,710 tCO₂e, 2030 target=1,084 tCO₂e).

KPU is working to expand its emissions inventory beyond the requirements set by the provincial government regulation (CNGR) and KPU's Sustainability Framework. This expansion considers the inclusion of additional Scope 3 (indirect) sources from air travel, waste, procurement, investments, and commuting. As KPU is in the early stages of measuring and managing emissions from these sources, this category prominently focuses on emissions related to building operations (natural gas and electricity). KPU has also initiated efforts towards climate resiliency, preparing the university community and its systems to anticipate and cope with the impacts of climate change.

KPU is working to go beyond provincial and Sustainability Framework targets, and address its Scope 3 Greenhouse Gas Emissions, including from campus community travel.

Using data from the 2024 Sustainability Survey, KPU's commuting emissions are 8,591 tCO₂e in AY23-24. This is almost four times more than KPU's building emissions.

[Learn more in "Transportation & Universal Accessibility".](#)

Buildings: Energy Efficiency, Use, and Greenhouse Gas Emissions

KPU's building-related emissions come from direct natural gas combustion (Scope 1) and purchased electricity (Scope 2). To reduce Scope 1 and 2 emissions from buildings, KPU develops, implements, and monitors an annual Strategic Energy Management Plan (SEMP) through BC Hydro's energy management program. The SEMP outlines a long-term strategy to plan energy conservation measures and track progress, with the objectives to enhance energy efficiency and reduce greenhouse gas emissions. By reducing KPU's reliance on natural gas and enhancing low-carbon electrification, KPU is actively mitigating climate change and advancing its net-zero commitments.

This academic year, KPU's Facilities Services department replaced the rooftop chiller at the Langley campus' Institute for Sustainable Horticulture, which contributed to energy efficiency and greenhouse gas reductions. In addition, the garage on the Langley Horticulture Campus was converted from an out-of-date natural gas radiant heater to a more robust electric system, contributing to greenhouse gas reductions. **Figures 3 and 4** below show KPU's total building-related greenhouse gas emissions and its natural gas consumption, respectively. KPU's building-related greenhouse gases are closely related to the use of natural gas in existing building systems, which can be observed to have similar trends.

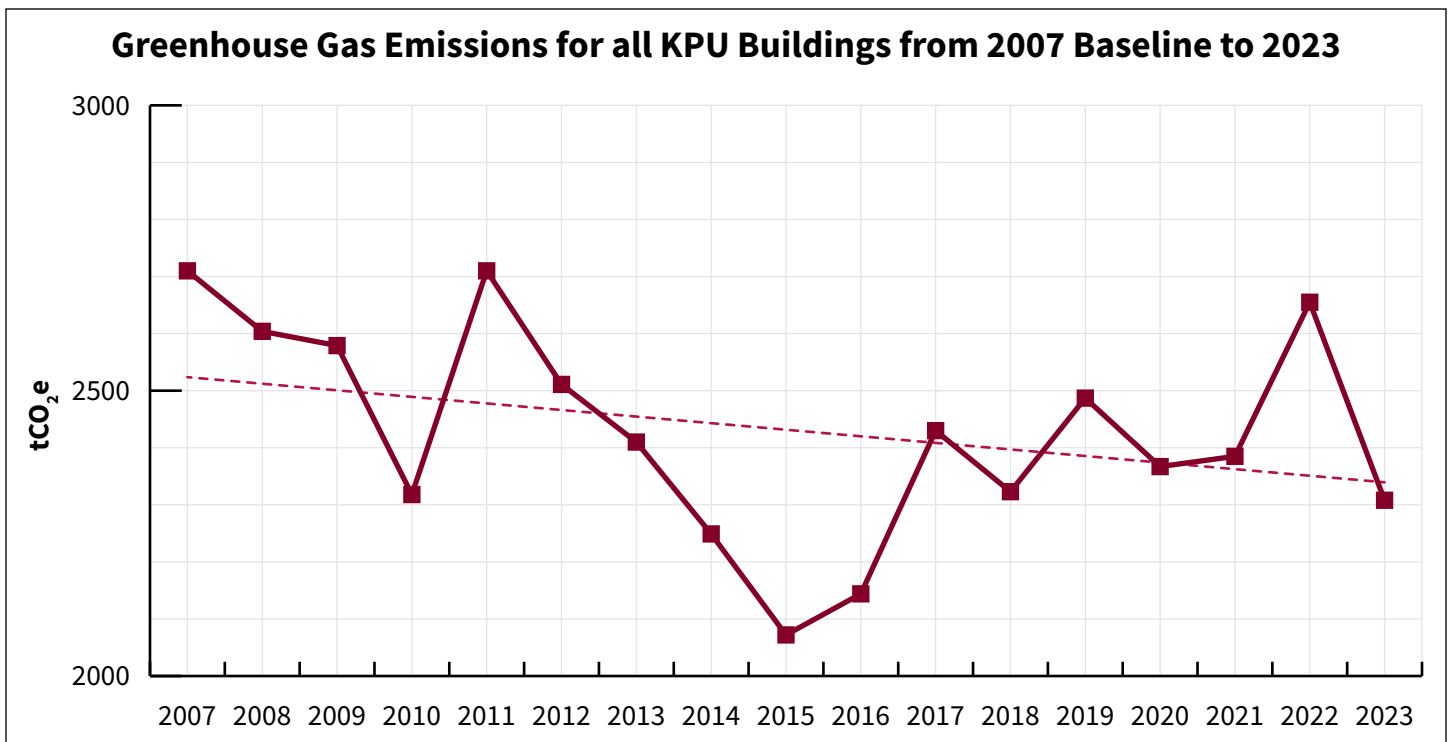


Figure 3: Total greenhouse gas emissions in tonnes of carbon dioxide equivalents (tCO₂e) for all of KPU's campus buildings from the 2007 baseline to 2023. This includes building emissions from electricity and natural gas. This graph shows a relatively flat trend line, with a slight decrease in greenhouse gases from 2007 to 2023.

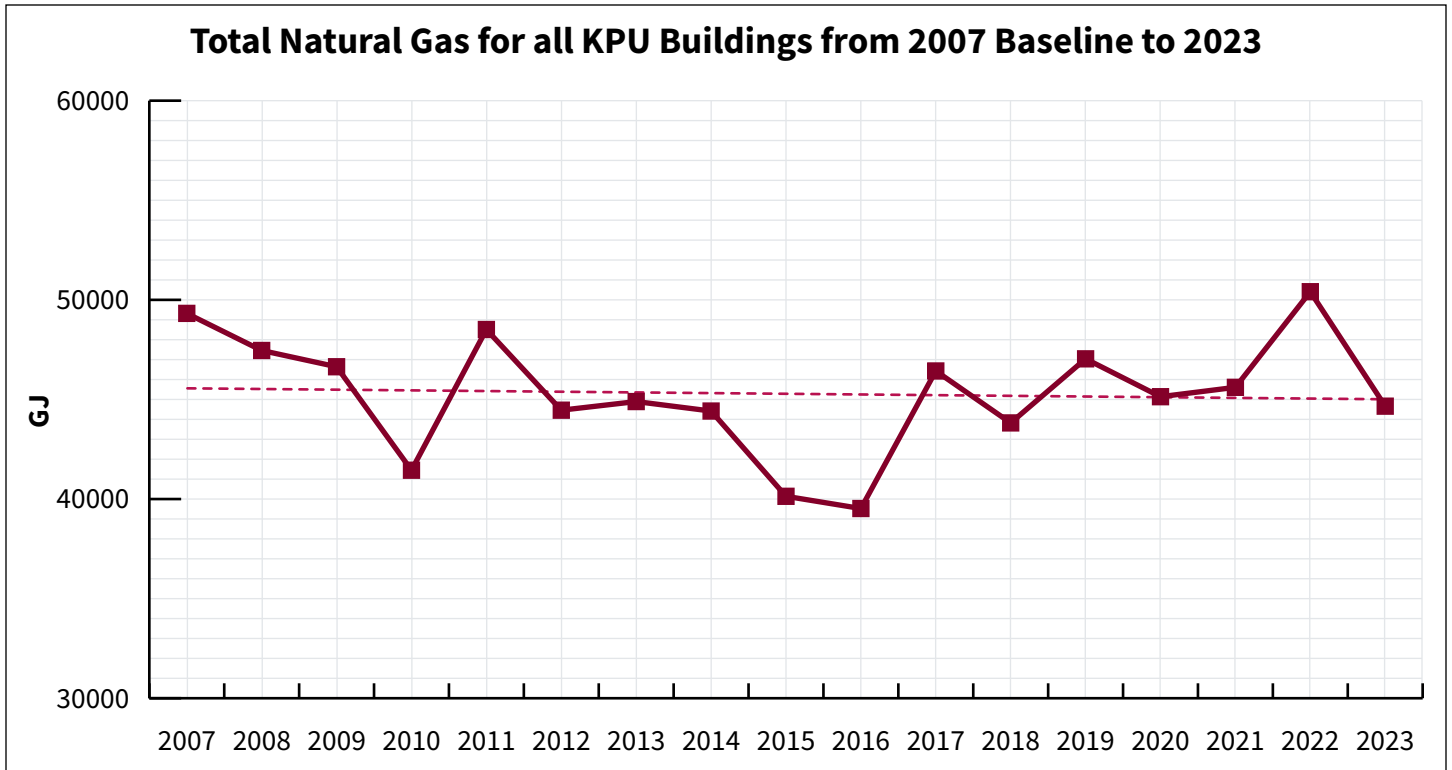


Figure 4: Total natural gas consumption in gigajoules (GJ) for all of KPU’s campus buildings from the 2007 baseline to 2023. This graph shows a relatively flat trend line, meaning minimal change in total natural gas consumption from 2007 to 2023.

The Facilities Services department continually determines ways to optimize KPU’s building systems, including diverse and creative opportunities to reduce energy use. This ongoing work is evident in KPU’s greenhouse gas intensity data (**Figure 5**), where there has been an ongoing downward trend. This indicates that despite KPU’s growing campus size, KPU has found ways to produce less greenhouse gas emissions per square metre. To ensure this trend continues, KPU has committed to achieving net zero emissions for all new buildings.

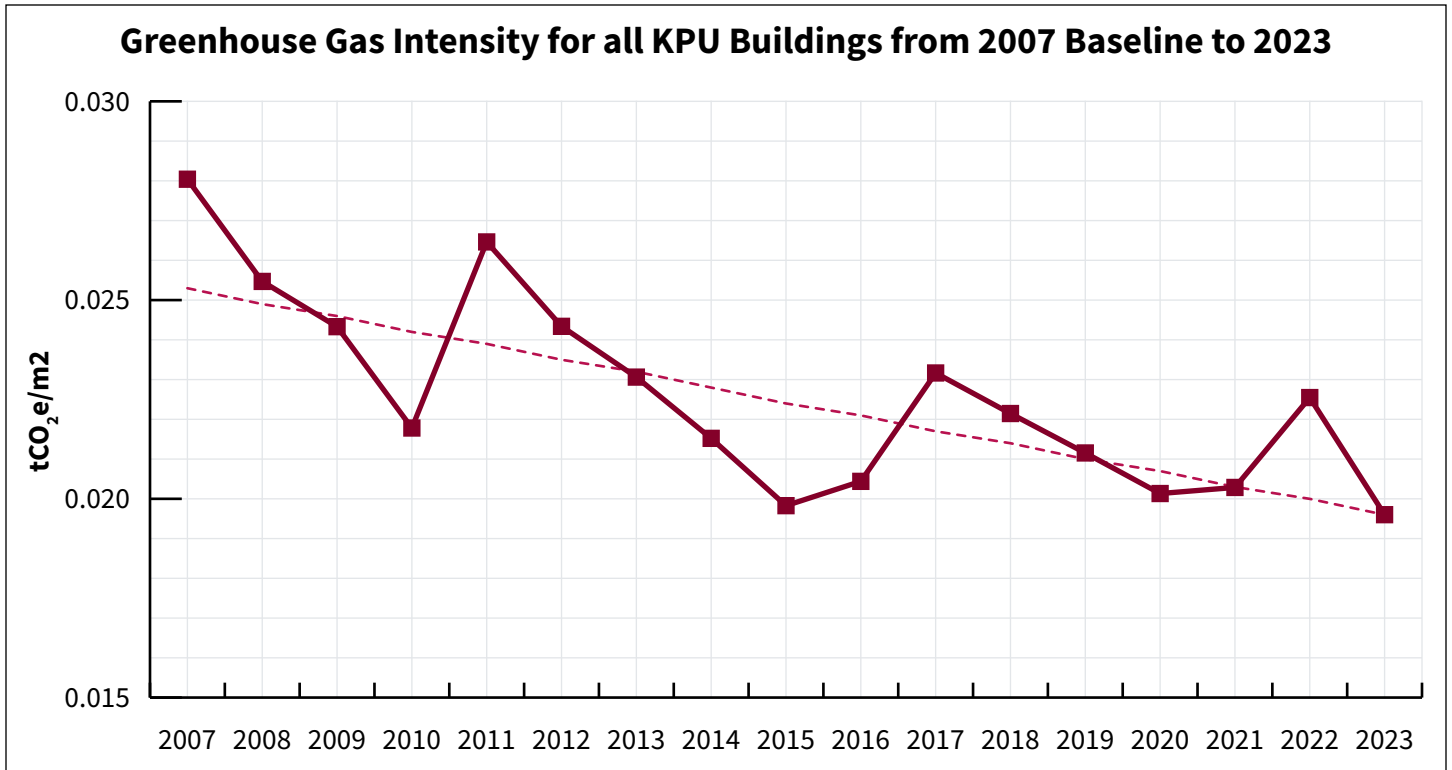


Figure 5: Greenhouse gas intensity in tonnes of carbon dioxide equivalents per square metre (tCO₂e /m²) for all of KPU’s campus buildings (electricity and natural gas) from the 2007 baseline to 2023. This graph shows a decreasing trend for greenhouse gas intensity from 2007 to 2023.

The Facilities Services department has also undertaken several energy studies recently to conserve energy, reduce greenhouse gas emissions, and advance low-carbon electrification. Most notably, Facilities engaged in a low-carbon feasibility study to develop strategic carbon reduction pathways for KPU’s Surrey, Richmond, Langley, and Tech campuses.

Building Emissions by the Numbers⁸

In 2023, KPU produced **2,383 tCO₂e** from buildings (natural gas and electricity combined).

KPU has reduced its greenhouse gas emissions **from buildings by 12% or 327 tCO₂e** since 2007.

Did you know that **natural (fossil) gas** is primarily (~97%) made up of methane, a greenhouse gas that is about **84 times more potent than carbon dioxide** over a 20-year time horizon?

KPU burned **44,663 GJ** of natural gas in 2023.

0.021 tCO₂/m² in 2023

GHG-I (emissions intensity) for all university buildings.

How are each of KPU's campuses individually performing?

Total energy use intensity in 2023 (electric and natural gas) in ekWh/m²

Surrey: 228
Civic: 210
Tech: 177
Langley: 273
Richmond: 171

Langley campus uses the most energy for every square metre. This is largely due to the greenhouse operations at the Langley campus.

Why does KPU's Civic Plaza campus have a much lower GHG intensity value compared to other campuses?

Civic Plaza is run on geothermal and district energy, energy systems which produce much less pollution than natural gas.

GHG emissions (buildings) in 2023 in tCO₂e

Surrey: 827
Civic: 10
Tech: 344
Langley: 636
Richmond: 533

Surrey campus produces the most GHG emissions in total. This is largely due to this campus having the most buildings.

GHG intensity in 2023 in tCO₂e/m²

Surrey: 0.021
Civic: 0.002
Tech: 0.019
Langley: 0.030
Richmond: 0.015

Langley campus produces the most GHG emissions for every square metre, whereas, Civic Plaza produces the least.

Adapting KPU's Buildings to Become Climate Resilient

In 2023, KPU's Facilities Services department took the first step towards climate adaptation at KPU by developing a **Preliminary Climate Adaptation Strategy** to provide an overview of regional predicted trends and specific considerations and risks for KPU's Surrey, Richmond, Langley, and Tech campuses, focusing on how major buildings, infrastructure, and services could be affected by climate impacts. This high-level document lays the foundation for KPU to make decisions that enhance climate resilience, synergistically work with planned decarbonization actions, and align with long-term campus planning considerations.



Image Description: Addressing climate change requires both mitigation and climate resilience through adaptation (free photos through Unsplash – mountains: Matt Palmer; flooding: Kelly Sikkema).

Sustainability Survey

The majority (78% employees, 55% students) of survey respondents correctly indicated the most common ways that Metro Vancouver will be impacted by climate change by 2050, e.g. decreased snowpack, sea level rise, and increased forest fire risk.

The majority (82% employees, 56% students) of survey respondents correctly indicated the ways in which climate change will likely affect residents of Metro Vancouver, e.g. threats to physical and mental health, less access to healthy and affordable food choices, damage to physical infrastructure in communities.

Land Stewardship

Sustainability Framework Performance Assessment	
SF 5.3.2	Building and Landscape Water Use Reduction
SF 5.4.1	Ecosystem-based Landscapes
SF 5.4.2	Biodiversity and Biophilia



Stewarding the land – including air, water, and soil – is paramount to nurturing a healthy environment, fostering a sense of place for the university community, encouraging human-nature relationships, and supporting the biodiversity of all living things. The university community is reliant on the health of these systems to flourish now and into the future.

KPU’s 2050 Official Campus Plan and its Sustainability Framework highlight actions to enhance land stewardship, however, further work is needed to create specific land stewardship plans, strategies, and policies. Beyond efforts listed below, this year KPU initiated background analyses that will inform more detailed open space plans for KPU’s campuses to support improved land stewardship and rainwater management moving forward, and help achieve the Sustainability Framework’s objectives around ecosystem-based landscapes, biodiversity and landscape water use reduction.

Sustainability Survey

The protection and improvement of natural spaces was the third highest priority amongst employees (28%).

22% of survey participants responded that “access to green spaces on campus” was one of their top three environmental sustainability priorities at KPU.

64% of employees and 75% of students did not know about the Westermann Community Gardens.

82% of survey respondents correctly indicated some or all causes of salmon decline.

Wild Spaces

KPU Wild Spaces is an interdisciplinary teaching and learning hub that focuses on ecological place-based education. The team of faculty, staff, and students explore intentional outdoor learning at and near KPU campuses. They have ongoing collaborations with the KPU Farm, the Cougar Creek Streamkeepers, and Logan Creek in Langley. Indigenous ways of knowing and accessibility are priorities for Wild Spaces, which advocates the idea of Nature as teacher: The local forests and streams, as well as the university campus grounds, become active agents in the learning process. Wild Spaces hosts monthly events that typically occur in water-dominant spaces, with a guided walk, discussion, and engagement in reciprocity. Attendees leave with a better understanding of how these natural areas function in the broader ecosystem in and around KPU and the need to protect them for future generations.

KPU Wild Spaces encourages learning to be taken outdoors, for the numerous benefits this provides learners—physical, mental, emotional, academically—and also to cultivate a sense of place and responsibility toward the natural world. Wild Spaces also builds community through consultations, collaboration, and connecting KPU students and employees across the disciplines.

– Lee Beavington, Wild Spaces Lead, Learning Strategist

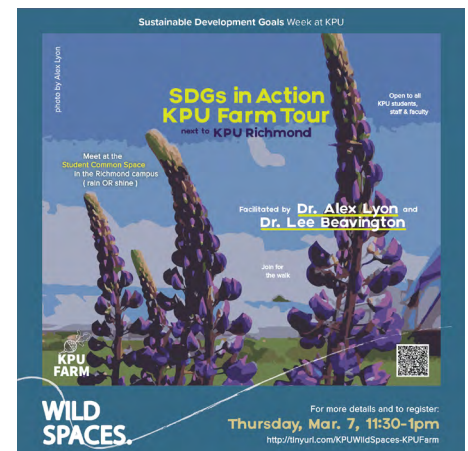
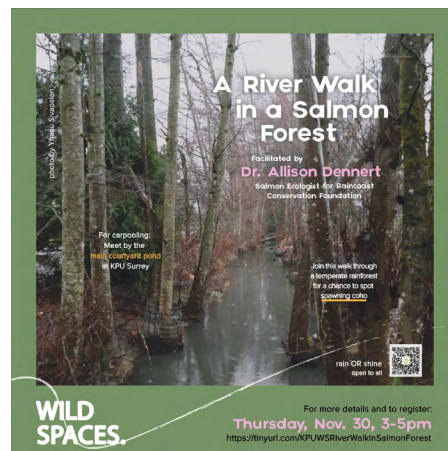
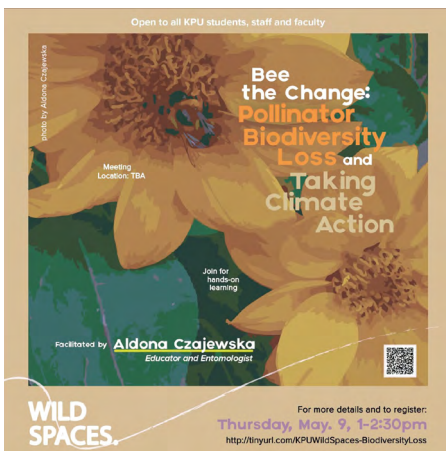


Image Description: A sample of Wild Spaces event posters created by student researcher Yhanu Sivapalan.

Forest Revitalization: A Community Approach

KPU Surrey's central forest, located near The Gathering Place and central courtyard – consisting of fir, cedars, chestnuts, and maples – is an invaluable place, benefitting the community by sharing its gifts of teaching and learning, quiet refuge, and beauty. In February 2024, 35 trees were removed following a 2019 arborist report recommending their removal due to safety and climate hazards. The forest had been suffering from poor water access and inadequate soil, worsened by high heat exposure from nearby parking lots and buildings. The Natural Spaces Advisory Committee, involving the community and Elder in Residence Lekeyten, identified the most at-risk trees. The removed trees were given to Kwantlen First Nation. KPU is exploring replanting with a diversity of native species that offer a variety of educational opportunities.



Image Description: Community outreach and engagement taking place at the KPU Farm.

Image Description: Sustainable Agriculture instructor, Dr. Alex Lyon, giving a talk during SDG Week about KPU's certified-organic Richmond farm. The tour highlighted how the farm fosters soil health and biodiversity and explores innovative approaches to preserving stored soil carbon.



Living Walls, Green Roofs

The Urban Ecosystems program has a 550 m² dedicated Roof Ecosystem Research Lab, where students test plants, grow food, and manage a grassland habitat, aiding in carbon sequestration. The green roof's features and processes, such as stormwater capture and carbon sequestration, are integrated into lessons. Students also engage with other “blue-green” living labs, including a vertical living wall rain garden and the Logan Creek Integrity Project, which involves restoring and managing 1.5 hectares of floodplain habitat. These living labs teach students about flooding, water preservation, food production, restoration, and invasive plant removal.



Image Description: Living wall at KPU Langley campus.

Campus Operations

Sustainability Framework Performance Assessment	
SF 5.3.1	Water Metering
SF 5.3.2	Building and Landscape Water Use Reduction
SF 6.1.1	Waste Diversion and Reduction Tracking
SF 6.1.2	Paper Use Reduction
SF 6.1.3	Eliminate Single-Use Plastics and other Single-Use Items
SF 6.1.4	Waste Diversion Facilities and Strategies
SF 6.1.5	Training and Communication
SF 6.2.1	Food Services Plan
SF 6.2.2	Food Production on Campus
SF 6.3.1	University-wide Sustainable Procurement Policies
SF 6.3.2	Affordability, Access, and People and Planet Friendly Foods



The way a campus runs provides a window into how sustainability manifests in the day-to-day. Examining operations to identify baselines and ways to improve is one way that KPU demonstrates its commitment to sustainability. This category is broken down into themes related to water, waste, food, and procurement.

Sustainability Survey

“Water conservation and quality” was ranked as the most important environmental sustainability priority for students (at 33%).

Water Reduction & Conservation

Water is a precious resource that permeates all levels of an institution’s operations. Water connects KPU to broader regional systems, plays a key role in ecosystem health, and is seen as sacred by many, including Indigenous water-protectors. KPU has begun tracking water use and will be able to compare the level of use year over year moving forward. KPU operates with low-flow faucets, taps, toilets, urinals, and showerheads; and collects rainwater through a variety of mechanisms to reduce its use of potable water. To address water-use objectives in the Sustainability Framework, more work is needed towards exploring strategies that capture and reuse rainwater and greywater for irrigation and other purposes.

Total amount of potable water used in KPU’s buildings in 2023: 49,137 m³ *

Surrey: 12,303 m³

Tech: 2,993 m³

Langley: 21,571 m³

Richmond**: 12,270 m³

*Civic Plaza is excluded as it is an air-space parcel in a multi-purpose building.

**Excludes farm schools.

Waste Minimization & Diversion

Waste represents one critical component of an institution’s ecological impact and contributions to indirect (Scope 3) greenhouse gas emissions. Whether through direct avoidance, careful reductions, or thoughtful reuse, considering the lifecycle of campus waste streams offers an opportunity for both education and engagement. Through this monitoring report and the guidance set out in the Sustainability Framework, KPU will be tracking waste production and diversion over time to understand the impacts of initiatives on overall consumption and waste management, which will help inform future waste-related training, communication, and program development.

In 2023, the Facilities Services department launched the Paper Towel Initiative: Discarded paper towels used in all KPU washrooms are now composted through KPU’s green waste collection stream. Signage placed in all washrooms showcases and advises the KPU community on this new initiative.

The initiative redirects 6,217 kg of discarded paper towels and 25,000 garbage bags annually from local landfills.

⁹ Waste Minimization & Diversion

Waste Diversion rate

KPU-wide: 51%

Amount of materials composted

KPU-wide: 58 metric tonnes

Diversion rate by campus

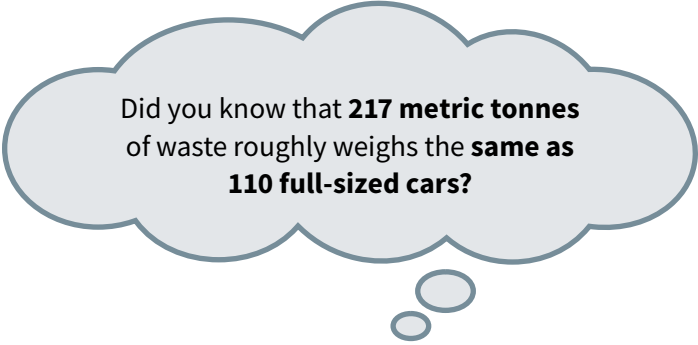
Langley: 57%

Tech: 55%

Surrey: 44%

Civic: 63%

Richmond: 49%



Did you know that **217 metric tonnes** of waste roughly weighs the **same as 110 full-sized cars?**

Amount of waste (mixed garbage) produced

KPU-wide: 217 metric tonnes

Amount of materials recycled (mixed recycling, cardboard, metals, wood)

KPU-wide: 142 metric tonnes

Sustainability Survey

74% of survey respondents responded that they use the water refill stations on campus.

62% of survey respondents correctly indicated that the most impactful waste reduction practice is to reuse what we have and reduce our overall consumption patterns.

When thinking about environmental sustainability priorities at KPU, “waste reduction and diversion” was ranked as the most important environmental sustainability priority for employees (at 32%) and a top-five priority for students (at 27%).

73% of survey respondents correctly indicated that it’s important to add food to the compost bin and not the garbage bin because when food is combined with landfill waste it produces methane, a greenhouse gas more potent than carbon dioxide.

Students Keeping Waste in Its Place

Students in the second-year Solid Waste Management course (ENVI 2310) of the Environmental Protection Technology program annually conduct a solid waste audit of the Langley campus. Students set out to determine the total weight of waste produced, types of materials discarded, and contamination rates to identify an approach to reduce waste on campus. Each year, they develop and share a report with the Facilities Services department.

Food Security on Campus

Providing access to healthy, culturally relevant, and low-impact food on campus promotes student health and well-being, supports academic success, fosters inclusivity and diversity, contributes to environmental sustainability, provides educational opportunities, and enhances community engagement. KPU has been working to address objectives in the Sustainability Framework, including its recent work to bring in a new food service provider that is endeavoring to offer more culturally appropriate and local food.

Supporting Student Access to Food

KPU donated \$1 million to the KPU Foundation in 2023 to create a food security endowment fund, which began providing \$50,000 in residual income this year. Student Awards and Financial Assistance is working to distribute funding from this endowment focused on student food security that will provide emergency food vouchers for any student in need and as a supplement to students receiving KPU bursaries. The food voucher program for the upcoming year is in partnership with Save-on-Foods who have augmented KPU's food vouchers with an additional 15% contribution (\$7,500).

Nutrition Month in March 2024 also led to increased food security for students, including grab-and-go breakfasts distributed to 3,000 students and a Food Skills Workshop which served 54 students.

Sustainability Survey

63% of employees responded that they have been customers at the student-run Grassroots Café.

62% of students did not know about the KSA Food Fridge while 11% have used this service.

When thinking about environmental sustainability priorities at KPU, "Sustainable food system (food production, packaging, shipping, waste)" was ranked as the third most important environmental sustainability priority for employees (at 29%) and the sixth most important for students (at 24%).

66% of students and 31% of employees did not know at all about the Kwantlen Street Farmers Market, while 5% of students and 21% of employees have been customers at the Kwantlen Street Farmers Market.

KPU has several impactful student-led food security initiatives:

Westermann Community Gardens at Surrey Campus is run by the Kwantlen Student Association (KSA), which enables students, clubs, departments, staff, and faculty to participate in and enjoy the benefits of gardening. The 24-plot garden is named in dedication to the Westermann Family, who were agriculturalists, gardeners, and supporters of education in Surrey.

Grassroots Café is owned and operated by students striving to provide healthy, local, organic, fair trade, and environmentally friendly products for the university community, with student food security at top of mind. Grassroots offers many whole food, vegan, and vegetarian options that are culturally relevant and that help reduce greenhouse gas emissions. They ensure food procurement is done in such a way that waste is limited. They also offer dine-in service to reduce waste and offer a 25-cent discount to those who bring their own mug.

Community Supported Agriculture (CSA) & Kwantlen St. Farmers Market are run by students, with the support of faculty and instructors, through the Sustainable Agriculture program. The CSA is a vegetable box program where community members support local farmers through a subscription program: members of the CSA pay an upfront cost so farmers can invest in farming supplies and equipment to carry out their farming season. The Farmers Market is run weekly in Richmond, where Sustainable Agriculture students sell the food they grow, gaining real-world experience running a farm business and contributing to their local community.

The Kwantlen Student Association (KSA) Food Bank offers a supply of emergency food relief for current KPU students. The program is run through an anonymous on-campus pickup program at Surrey, Richmond, Langley, and Tech. Students are eligible for one food hamper every two weeks.



Procurement

Procurement serves as the key process for sourcing goods and services at KPU and is committed to sustainable procurement practices and to developing our supply chains that align with these values. All buying decisions are required to follow guidelines established by Procurement Services respecting the procurement of environmentally responsible and energy efficient goods, equipment, and services. Further, all strategic procurements with a value exceeding \$75,000 are required to include environmental, social, and governance (ESG) criteria in the selection process.

Since January 2024, the University has implemented the mandatory submission of a Supplier Sustainability Questionnaire for certain procurement competitions. Suppliers are asked to provide insights into their environmental and social sustainability policies. The intention of the Sustainability questionnaire is to demonstrate the values and expectations of the University and responses received helps identify trends and best practices in sustainable procurement, as well as support governance and reporting requirements, such as for Bill S-211 Forced Labour and AASHE STARS.

Additionally, Procurement Services has introduced a directory of Indigenous-owned businesses into our procurement process. This resource aims to advance equity, diversity, and inclusion in to our supply chain by expanding opportunities for Indigenous businesses and promoting greater representation of Indigenous suppliers in upcoming University projects.

Looking ahead, future enhancements to KPU’s sustainable procurement strategy will include the development of a Supplier Code of Conduct, which will be incorporated into the terms and conditions of doing business with KPU and Identify high risk suppliers to improve our supply chain and align with our mission, vision and values.

Transportation & Universal Accessibility

Sustainability Survey

When asked about environmental sustainability priorities, “sustainable transportation” was voted as the third most important (27%) overall for both students and employees.

Sustainability Framework Performance Assessment	
SF 5.2.1	On-Campus Mobility and Accessibility
SF 5.2.2	Commuting to and Between Campuses

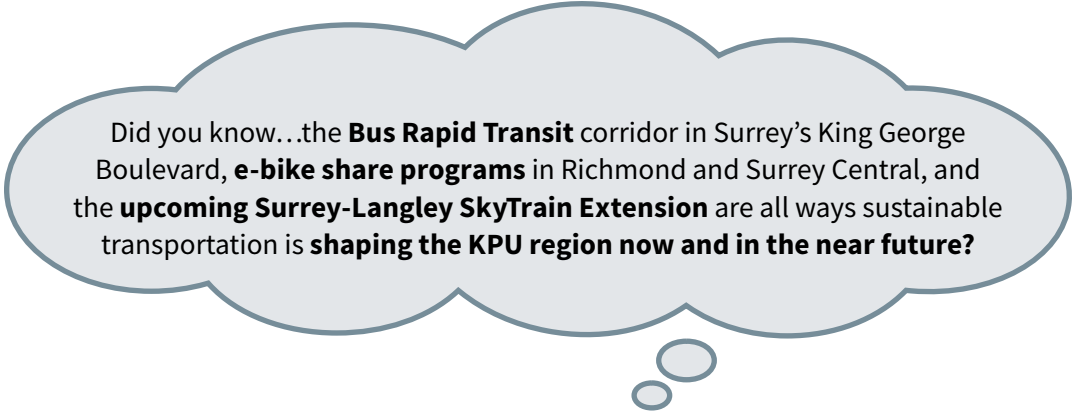


Rick Hansen Accessibility Certification for Universal Accessibility:

All of KPU's campus buildings across its five campuses have completed a Rick Hansen Accessibility Certification audit, providing the university with a rating for each building and a detailed Gap Analysis Report for further improvements. KPU's Wilson School of Design received a gold standard.

Ease of transport and movement impacts sustainability by lowering barriers to accessing places and opportunities and through its effects on greenhouse gas emissions. This category is separated into the following themes related to sustainable transportation: Infrastructure and Strategy & Initiatives.

Sustainable transportation has been noted as a top priority for students and employees, however, public engagement input as well as survey data has indicated there are gaps in awareness and access to sustainable transportation options. As seen below, many campus members were unaware of existing carpool discounts or Intercampus Shuttle services. As well, significant percentages of students and employees cite barriers such as inconvenient transit routes, lack of safe cycling and active transportation infrastructure, and long commute times due to proximity of their residence to campus. Greater awareness is also needed to highlight that personal transportation choices, such as driving alone in vehicles, significantly contribute to greenhouse gas emissions and that single-occupancy vehicles are the largest source of greenhouse gas emissions in the region and a major contributor of climate change.



Did you know...the **Bus Rapid Transit** corridor in Surrey's King George Boulevard, **e-bike share programs** in Richmond and Surrey Central, and the **upcoming Surrey-Langley SkyTrain Extension** are all ways sustainable transportation is **shaping the KPU region now and in the near future?**

Sustainability Survey

What factors would encourage survey respondents who don't currently **walk** to start as an option for commuting to and from campus?

- » 64% say "living closer to campus"
- » 14% say "classes/meetings scheduled during daylight hours"
- » 13% say "being able to use public transit or a personal vehicle for part of the trip"
- » 10% say "more separation from vehicle traffic"
- » 9% say "better lighting along my route"
- » 17% say "nothing would increase my likelihood of walking to campus"

Sustainability Survey

What factors would encourage survey respondents who don't currently **bike or roll** (skateboard, scooter, wheelchair) to start as an option for commuting to and from campus?

- » 36% say "living closer to campus"
- » 29% say "a shorter overall commute time"
- » 24% say "I do not own a bicycle or other device"
- » 17% say "more separation from vehicle traffic"
- » 15% say "safe, secure, and accessible on-campus storage for my bicycle, scooter, or other device"
- » 13% say "access to a cheaper personal e-bike/scooter"
- » 17% say "nothing would increase their likelihood"

Sustainability Survey

What factors would encourage survey respondents who don't currently use **transit** (e.g. bus, SkyTrain) to start using it as an option for commuting to and from campus?

- » 46% say "a shorter overall commute time"
- » 22% say "having a transit stop closer to where they live"
- » 21% say "having fewer transfers"
- » 14% say "having a cheaper transit pass"
- » 23 % say "nothing would increase their likelihood"route"
- » 17% say "nothing would increase my likelihood of walking to campus"

Sustainability Survey

9% of survey respondents drive an PHEV or EV to/from campus.

Infrastructure

To ensure sustainable ways of getting around are the most convenient and accessible, supportive transportation infrastructure needs to be provided. The below metrics offer an overview of some of the ways KPU is helping reduce the impacts of campus commuting. KPU currently has some infrastructure to support sustainable transportation choices, including carpool parking stalls, weather protected micro-mobility lockers, and end-of-trip facilities, such as showers and lockers, to make active transportation to get to and from campus more desirable.

Total preferential carpool parking stalls

Surrey Campus: 14 stalls

Total weather-protected bicycle/micro-mobility lockers

40 in total, 10 at each Surrey, Tech, Richmond, and Langley campuses

End-of-trip facilities

2 showers/change rooms at both the Surrey and Richmond campuses; lockers available to rent at Surrey, Richmond, Langley, and Tech.

Electric Vehicle Charging Plan

KPU currently has EV charging stations across three campuses, including KPU Surrey, Richmond, and Tech. To expand this, in 2023, KPU – led by a cross-departmental working group – created a long-term, phased electric vehicle charging infrastructure and management plan to advance sustainable transportation and address the growing electric charging demands from the university community. This plan addresses electric vehicle charging at KPU's Surrey, Richmond, Langley, and Tech campuses, outlining funding opportunities, Rick Hansen Foundation accessibility considerations, and recommendations for electrical upgrades.

Total electric vehicle charging stations

Richmond: 6 level 2 charging outlets

Surrey: 4 level 1 charging outlets

Tech: 10 level 1 charging outlets

Strategy & Initiatives

Sustainable transportation strategies and initiatives are essential tools to encourage sustainable transportation modes to reduce commuting-related greenhouse gas emissions, optimize transportation infrastructure, reduce traffic congestion, shift parking to alternative uses, and support health and well-being.

Transportation Demand Management Strategy

KPU has been working to develop a Transportation Demand Management (TDM) Strategy to provide a strategic roadmap to advance sustainable transportation for commuting to/from and between KPU's five campuses over the next 25 years with short, medium and long-term recommended actions. The purpose of the TDM Strategy is to align the institution's strategic campus and community planning priorities with opportunities to manage commuting travel demand, particularly away from drive-alone single-occupancy vehicles; increase transportation choices; and reduce greenhouse gas emissions associated with campus community travel. This strategy will provide a set of primary and secondary actions as well as an implementation framework to guide KPU to encourage, advocate, implement, and advance sustainable campus travel.

Campus Member Commuting Distribution

Current campus commuting distribution, based on the Sustainability Survey results, shows that the majority of students (74%) are taking more sustainable commuting options to get to and from campus. "More sustainable commuting options" include shared vehicles (carpool, carshare, dropped off, and taxi/ride hailing), transit (bus, SkyTrain), active transportation (biking, e-biking, rolling, bicycle/scooter share, walking), drive-alone vehicles (electric/plug-in-electric drive-alone private vehicle), and others such as motorcycles, as they generally produce less greenhouse gas emissions compared to fossil-fuel operated vehicles. The majority of employees (68%) are taking less sustainable commuting options. "Less sustainable commuting options" include drive-alone private gasoline, diesel, or hybrid vehicles, due to their high greenhouse gas emissions contributions compared to alternative modes.

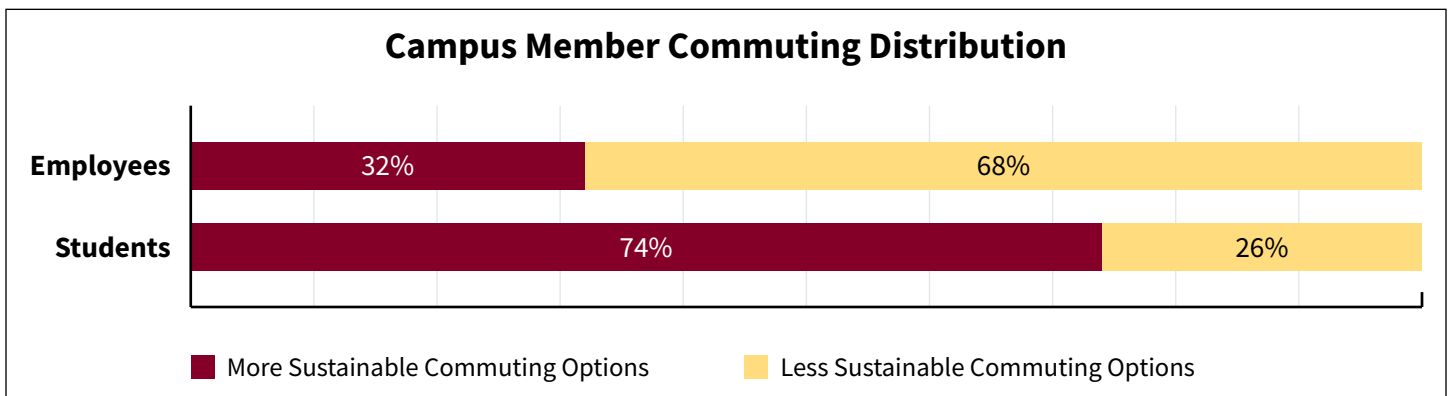


Figure 6: Campus Member Commuting Distribution

Commuting to and from KPU

Scope 3 Commuting GHG Emissions

This academic year, KPU took the next step in expanding its GHG inventory of Scope 3 emissions by quantifying commuting emissions for the campus community. Through an inaugural Sustainability Survey, respondents were asked about their travel patterns in a “typical week” from their place of residence to their primary campus.

Key Takeaways:

- » KPU’s commuting emissions total to 8,591 tCO₂e, which is **almost four times the amount of KPU’s building emissions** from natural gas and electricity use (2,383 tCO₂e).
- » Commuting emissions from employees and students **primarily come from drive-alone vehicles**. This is because drive-alone vehicles, or a vehicle where there is only one occupant, are currently a common commuting choice among campus members. Drive-alone vehicles have more greenhouse gas emissions per trip compared to shared vehicles or transit. **Fossil fuel-based vehicles (diesel, oil, and hybrid) contribute to the majority of drive-alone vehicle emissions and overall commuting emissions.**
- » Commuting totals from **students are higher than employees because there are more students** than employees at KPU.
- » Comparing “per capita” emissions helps to better understand the relative impact from commuting when looking at employees and students. For example, although commuting emissions from students equals 6,606 tCO₂e compared to 1,985 tCO₂e for employees, the **per capita emissions from employees (1.09 tCO₂e/person) is over double that of students (0.50 tCO₂e/person)**. This means employees produce more greenhouse gas emissions from commuting to and from campus compared to students.

Cars—whether fossil fuel-based or electric—have significant environmental impacts because of resource-intensive manufacturing and infrastructure. Fossil fuel-based vehicles (diesel, oil, or hybrid vehicles), compared to electric vehicles, contribute directly to air pollution because they produce greenhouse gases when operating.

Campus members can reduce their commuting emissions by carpooling or taking transit, for part of or their whole commute. Active transportation, such as cycling, produces zero operational greenhouse gas emissions, helping to lower each KPU member’s personal impact on air pollution.

		Employees	Students
Drive-alone vehicles – ALL	Total (tCO ₂ e)	1,788	3,917
	Per capita (tCO ₂ e/person)	1.31	0.93
Shared vehicles	Total (tCO ₂ e)	67	759
	Per capita (tCO ₂ e/person)	0.92	0.97
Transit	Total (tCO ₂ e)	99	1,851
	Per capita (tCO ₂ e/person)	0.42	0.26
Other	Total (tCO ₂ e)	31	78
	Per capita (tCO ₂ e/person)	0.21	0.071

Total overall emissions	1,985	6,606
Total per capita emissions	1.09	0.50
Total overall emissions (employees and students) = 8,591 tCO₂e		

Table 2: Scope 3 Commuting Emissions data by mode category, showing total and per capita emissions for employees and students. This table presents three main categories of commuting modes: “Drive-Along Vehicles”, also referred to as single-occupancy vehicles (SOVs); “Shared Vehicles”, also known as high-occupancy vehicles (HOVs), which include carpooling, carsharing, drop-off, and taxi/ride-hailing; and “Transit”, which includes the regional SkyTrain and bus systems. A fourth category, “Other”, captures less common modes such as motorcycles and ferries.¹⁰

		Employees and Students
Drive-alone vehicles – fossil fuel based (diesel, oil, and hybrid)	Total (tCO ₂ e)	5,692
	Per capita (tCO ₂ e/person)	1.11
Drive-alone vehicles – electric/hybrid-electric	Total (tCO ₂ e)	14.5
	Per capita (tCO ₂ e/person)	0.03

Table 3: Scope 3 Commuting Emissions data by drive-alone vehicle type, showing total and per capita emissions for employees and students combined.¹¹

Getting Between KPU’s Campuses: The Inter-campus Shuttle

Scope 3 Inter-campus Shuttle GHG Emissions

		Inter-campus Shuttle Service
Total (tCO ₂ e)		70

Table 4: Scope 3 Inter-campus Shuttle Emissions.⁹

Average Daily Ridership in AY 2023-2024: 199 campus members

¹⁰Data from the Sustainability Survey, which asked about commuting patterns between respondents’ place of residence and primary campus locations, was used to estimate GHG emissions for a “typical week” of a semester. This involved analyzing travel distances, modes, and frequency, applying emission factors, and scaling results to the population. Annual emissions were then estimated by adjusting for employee and student travel patterns across terms and summer enrollment.

¹¹Inter-campus shuttle emissions were calculated using shuttle data from September 2023 to August 2024. Data was calculated using origin and destination trip information, distance traveled, emissions factors, and total number of trips. Ridership was not considered, as emissions remain roughly the same regardless of the number of passengers in this case.

KPU's Intercampus Shuttle has over 4,000 monthly passengers during peak months of the year, including the beginning of the fall semester from September to November, and winter semester from February to March. These passenger counts are calculated using a typical week from Monday to Thursday. Fridays, with a reduced schedule, are not included in the ridership count or Figure 6, meaning the total monthly and average daily ridership is higher than shown. Ridership drops during the summer months, reflecting the reduced campus shuttle schedule from June to August.

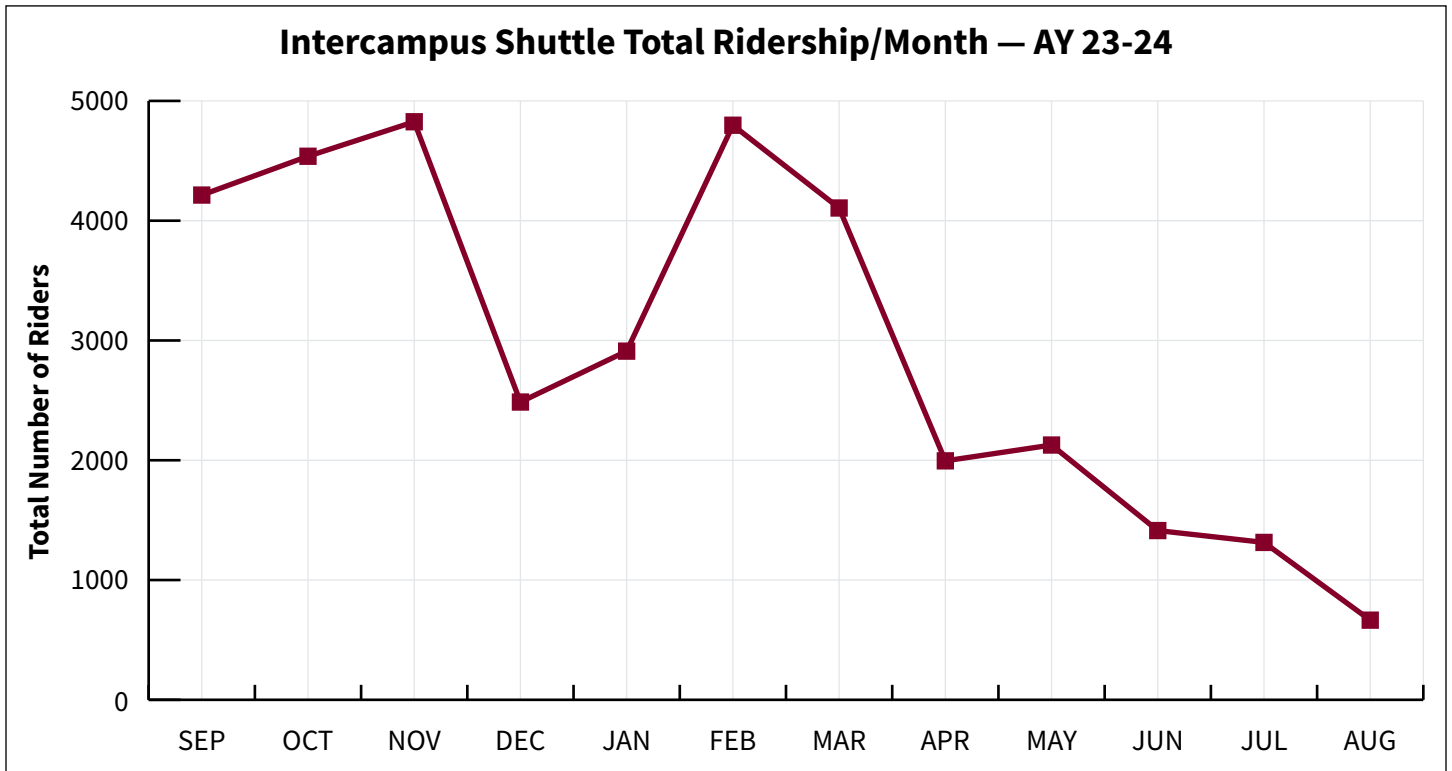


Figure 7: Intercampus Shuttle total monthly ridership for each month of AY 23-24. This graph shows the ridership during a typical operating week from Monday to Thursday.



Ride to Thrive

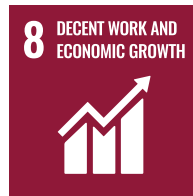
In October 2023, the Office of Sustainability held “Ride to Thrive Day”, in collaboration with the Kwantlen Student Association. As a part of the month-long event, Thrive Month, the Office of Sustainability celebrated environmental wellness by focusing the event on the many sustainable ways the KPU community can get to, from, and between campuses. In partnership with HUB Cycling, a Celebration Station for Go by Bike Week was stationed at the Surrey campus, providing free bike maintenance, cycling information, and resources for safer cycling. TransLink joined as another community partner, celebrating the announcement of the new R6 Rapid Bus and informing the community of the new bus stop on 72nd Avenue right in front of the Surrey campus. Over 100 students, faculty, and staff shared their personal stories, valuable feedback, and enthusiasm throughout the event.



Image Descriptions: Interactive booths during Ride to Thrive Day in October 2023.

Education

Sustainability Framework Performance Assessment	
SF 4.2.1	Applied Learning on Campus
SF 4.2.3	Sustainability Grant



Building awareness about sustainability challenges and their solutions through education is one of the key ways KPU can contribute to advancing sustainability. KPU is teaching the next generation of leaders. By embedding sustainability into teaching and learning, KPU is helping to prepare students to be responsible global citizens now and in the future.

19% of all courses are related to or focused on sustainability¹²

60% of academic departments have at least one sustainability-related or -focused course offering¹²

Sustainability Survey
38% of faculty and 27% of students strongly agreed that sustainability and climate change were discussed and incorporated into their courses.

¹²This course inventory was evaluated according to the requirements of AASHE's STARS reporting framework.

The Climate+ Challenge — Taking Action, Fostering Hope

The Climate+ Challenge is a KPU-wide initiative that engages students, staff, and faculty in learning about climate change, through an empathetic and solutions-oriented lens. It is called Climate “Plus” due to the inherent social, cultural, economic, and other (“Plus”) elements that intersect with climate change challenges and solutions. Instructors can join the challenge to enhance KPU’s Climate+ course offerings by adding climate change content to their courses, labs, or programs. In the 2023-2024 academic year, faculty self-reported over 100 Climate+ courses. Presently, the Climate+ Challenge endeavours to establish a dedicated climate stream for students, enabling them to delve into Climate+ topics with a heightened focus throughout their academic journey and to receive a formal acknowledgement of their efforts.



Being a part of KPU’s Climate+ Challenge team for two years has emphasized to me the importance of interdisciplinary efforts on engaging in climate. Our approaches, arising from literature, community engagement, and our own teaching experiences range from discussions and guest lectures to theatre, book clubs, nature walks and more. Collaboratively, we have developed new ways to integrate climate+ content into curriculum and KPU culture, and collectively, this work has led to greater shared understanding of the breadth of climate+ challenges and ways of knowing within KPU faculty.

– Sue Fairburn, Design Instructor, Climate+ Challenge member

The Climate+ Challenge is a great example of how collaboration makes the university stronger. I've had the chance to work with instructors from several different faculties on meaningful work that could make a difference for the world and the students. We have worked together hosting events, creating curriculum and even doing strategic planning. It has been a real pleasure and a highlight of my time so far at KPU.

– Tracy Sherlock, Journalism Instructor, Climate+ Challenge member



Image Description: Sue Fairburn, Design Instructor (left) and Dean of Science, Brett Favaro (right) introducing the Fire Panel during SDG Week hosted by the C+C.



Image Description: Christina Shorthouse, Applied Communications Instructor (left) and David Sadoway, Policy Studies and Geography Instructor (right) tabling about C+C on campus.



Image Description: Christina Shorthouse of the Climate+ Challenge tabling about C+C on campus.

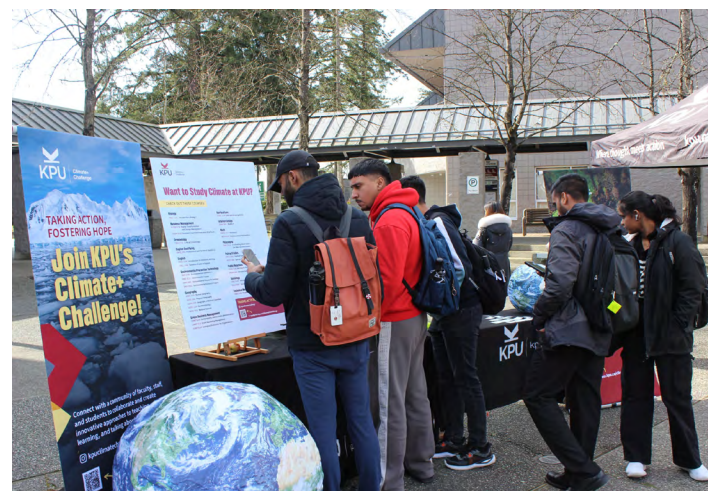
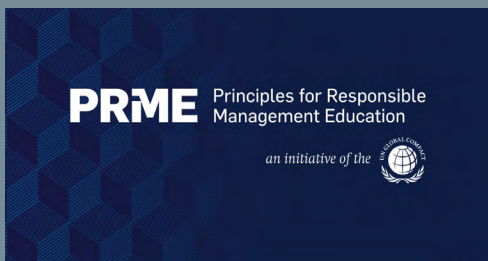


Image Description: Students check out the Climate+ Challenge table during the SDG Week Fair in the Surrey campus courtyard.

United Nations Sustainable Development Goal Champions

In the Fall 2023 semester, the Office of the Provost created a new time-release program, the UN SDG Champions, to embed the SDG's into KPU's academics. Two faculty were assigned to further advance the recommendations of KPU's UN SDG Mapping Project ([see Leadership & Governance](#)). Six faculty members were assigned, supported by the Teaching and Learning Commons, through a single-course time release to champion the advancement of the UN SDGs through innovative project work including:

- » Introducing and/or advancing awareness of the SDGs in respective departments, through program curriculums, assignments, learning outcomes, and program reviews
- » Developing a concept paper for the creation of an “SDG House” at one of KPU’s campuses
- » Benchmarking departmental activities to SDG best practices
- » Creating a WordPress website that will guide faculty on how to engage with the UN SDGs in their teaching practices at the course level



Principles for Responsible Management Education (PRME)

Since 2020, KPU’s Melville School of Business (MSB) has been a PRME signatory embedding PRME principles into business management curriculum and collaborating with other KPU sustainability initiatives. This year, MSB added PRME principles to its Citation in Cloud Architecture and Security and Diploma in Front-End Development, and integrated the UN SDGs into two marketing courses, Environmental Sustainability in Marketing (MRKT 2500) and Social Media Marketing Strategy (MRKT 3333).

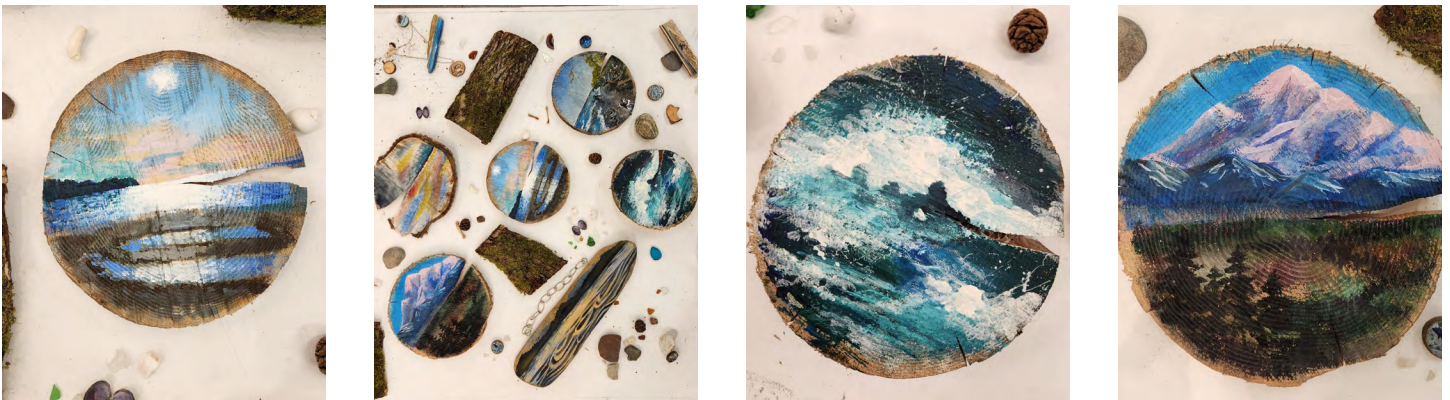


Image Description: Artwork from third-year fine arts student Emma Francis for the course Art and Climate Change (FINA 3202). These watercolor paintings on gessoed clear cuts and driftwood have been created “to reflect on the state of the ocean, the power of the sea, and humans’ relationship to water”.

Place-Based and Experiential Learning Spotlight

Sustainable Agriculture Program

The **Bachelor of Applied Science in Sustainable Agriculture** is unique in North America, distinguished from other agriculture degree programs by providing a broad scope of study related to sustainable food production as an integral and critical element of sustainable human existence. Through a distinctive and exceptional combination of classroom and farm-based learning, the program offers a comprehensive perspective on the science of agroecosystem design and stewardship; innovative and ecologically sound crop production methods; sustainable farm business management; and economic, social, and environmental challenges facing our food system.

All Sustainable Agriculture students complete a full year of applied learning on the KPU Richmond Farm. Following seasonal production cycles, students grow more than 40 different fruit and vegetable crops, which they help sell at a local farmers market and through wholesale channels. Students' farm experience helps shape their applied experimental research projects in fields ranging from soil carbon sequestration to organic pest management. The research results help shape and inform the approach to farming at KPU in subsequent years.



Image Descriptions: Sustainable Agriculture program students and instructors planting, growing, and selling produce from the KPU Farm.

Environmental Protection Technology Program

The **Environmental Protection Technology (EPT) Program** is a long-standing two-year diploma, which includes two paid co-op terms, that provides students with the hands-on experience, practical skills, and comprehensive knowledge in environmental protection technology, impact assessment, waste minimization and management, air and water pollution monitoring and control, and contaminated site investigations.



Image Description: Student from the Environmental Protection Technology Program preparing a sediment sample to be sent to a laboratory for analysis.

More than 80% of graduates are hired within 3 months of finishing the program in industry or government.

[The] EPT [program] helped with my desire to learn the most up-to-date knowledge within the environmental sector and strengthened my commitment to contributing to the betterment of human interaction with the environment. Throughout the program, I gained hands-on experience in the environmental protection field, and this helped me start my career in environmental consulting.

– Former student, EPT Program

(Re)Designing the City for Climate Justice

Policy Studies 2140 CityLab: (Re)Designing the City for Climate Justice offered each Spring semester, encourages students to study the City Centre area in downtown Surrey, which includes KPU's Civic Plaza campus. Students intensively apply their knowledge of energy, climate change, socio-economic justice, and planning justice to issues about food systems, housing, and mobility in Surrey's City Centre. By the end of the course, students have the tools to devise their climate justice visions and story maps for the future of Surrey City Centre, applying their knowledge to action.



Image Description: The Thinking Machine play poster from English 3355 class.

Climate Change Theatre

In the Fall semester (2023), English 3304: Canadian Drama participated in the Climate Change Theatre Action Festival, a worldwide festival that commissions short plays about the climate crisis. Commissioned through the Festival, English 3304 students showcased their creative interpretation of *All Good Things Must Begin* by Octavia Butler to an audience at KPU. In the Spring semester (2024) English 3355: Modern and Contemporary Drama students devised an original play, titled *The Thinking Machine*, taking inspiration from other plays, each of which considers how characters continue to work toward better futures. Both plays followed with courageous discussions, exploring the plays’ meanings and metaphors and promoting deep reflections about climate change through an unconventional medium.

Clean-Air Shelters for Wildland Firefighters

During the Spring semester (2024), students of the Wilson School of Design explored the intersections of design, technology, climate adaptation, and health in the third-year course *Design Implementation: Design for High Risk and Unpredictable Contexts* (DEPD 3610). Working with external partners, such as BC Wildfire Service Research and Innovation and experts across academic departments, students were tasked with developing a highly functional product that integrates with existing systems to aid wildland firefighters in managing the effects of wildfire smoke exposure. Learning with technologies such as anemometers and air quality monitors for testing, soft construction, 3D modeling, and 3D printing, students successfully developed **two full-scale, fully functional concept prototype clean-air shelters with air units.**



Image Descriptions: Full-scale, fully functional concept prototype clean-air shelters, Fireline and Phoenix, developed by third-year students of the Wilson School of Design.

Outreach

Sustainability Framework Performance Assessment	
SF 3.4.1	Internal Communication
SF 4.1.1	Sustainability Literacy
SF 4.1.2	Student Life



Engaging the KPU community – through events, social media, programming, and pop-up engagements – is essential to fostering a culture of sustainability, empowering others to take responsibility for their actions, driving positive change both on and off campus, and helping to educate beyond the walls of the classroom.

The Sustainability Hub (See Leadership and Governance) is working to connect with students in support of advancing Sustainability Framework objectives around internal communications, and providing students with more opportunities to engage with sustainability at KPU while enhancing their student experience.

The Sustainability Survey and KPU’s student and employee outreach initiatives around sustainability, such as Thrive Month, UN SDG Week, and new employee orientation, help advance Sustainability Framework objectives for sustainability literacy and student life.

Sustainability Survey

89% of employees and 82% of students agreed that “engaging in sustainability-related behaviour is important to [them]”.

60% of students agreed that they see a connection between their studies and sustainability at KPU.

71% of employees agreed that they see a connection between their work and sustainability at KPU.

Top Environmental Sustainability Priorities for Survey Respondents — KPU's Annual Sustainability Survey 2024

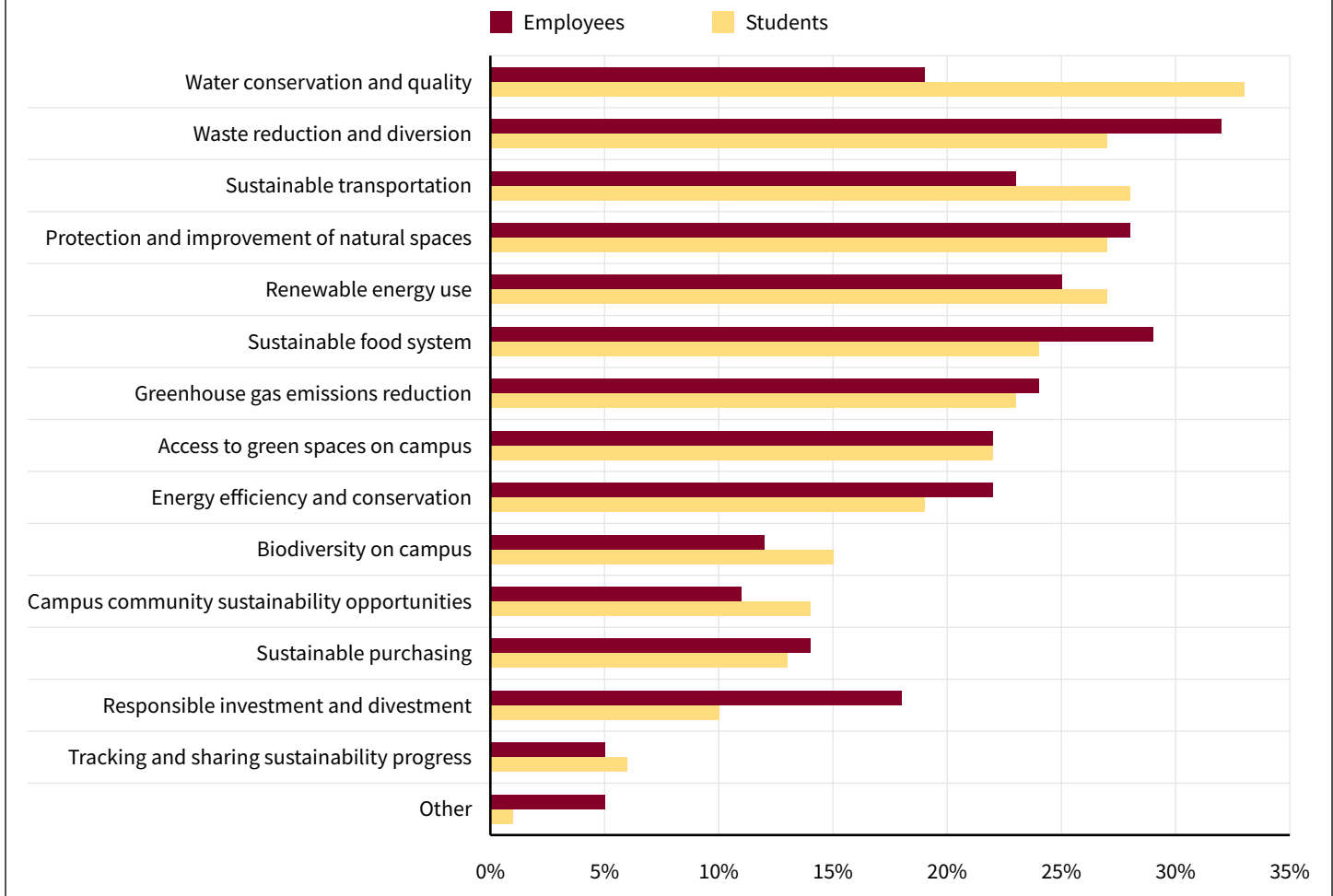
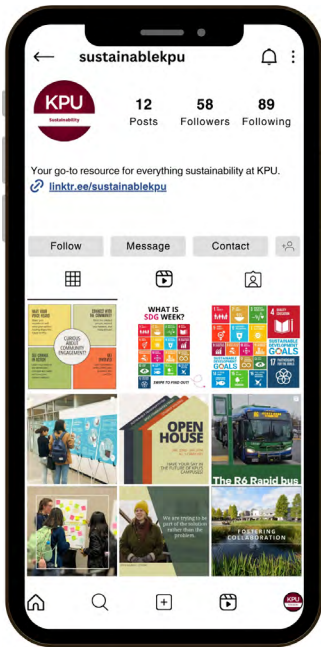


Figure 8: Top environmental sustainability priorities for survey respondents at KPU. This data is from the Sustainability Survey in 2024. Survey respondents were asked: “Which are the most important to you when thinking about KPU? Please select up to three.”.

Based on the Sustainability Survey results, the following were selected as **top three** among all survey respondents: “**Water conservation and quality**” (31%), “**Waste reduction and diversion**” (28%), and “**Sustainable transportation**” (27%). The top three environmental sustainability priorities for KPU employees in Spring 2024 were “Waste reduction and diversion” (32%), “Sustainable food system (food production, packaging, shipping, waste)” (29%), and “Protection and improvement of natural spaces (e.g. trees, wetlands, etc.)” (28%). Students top three priorities were “Water conservation and quality” (33%), “Sustainable transportation” (28%), and “Renewable energy use” (27%).

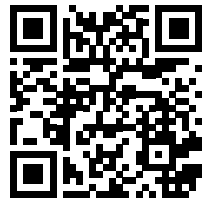


Sustainability Integrated into New Employee Orientation:

KPU kicked off 2024 with sustainability at top of mind during the New Employee Orientation. The Office of Sustainability shared how employees can actively engage in sustainability efforts at KPU, including utilizing sustainable campus services that help minimize employee impacts on the planet.

Sustainable KPU Instagram

Recently launched, the SustainableKPU Instagram is a go-to resource for everything sustainability-related at KPU. Run by the Office of Sustainability, this Instagram page is intended to share stories, events, educational content, and news about sustainability at KPU and beyond.



Follow SustainableKPU here.

UN Sustainable Development Goals Week

In March 2024, KPU hosted its second annual Sustainable Development Goals (SDG) Week. SDG Week Canada is a national collaboration in March, featuring workshops, panels, and other interactive programming to increase awareness of and engagement with the 17 SDGs on university and college campuses. Throughout this week, KPU aims to increase awareness, foster hope, and inspire action from individuals and community to advance the SDGs at KPU by celebrating the advancements towards the goals and working to strengthen partnerships towards meaningful and sustainable change. Events and activities ranged from a student-featured Upcycled Design Showcase; a KPU Farm tour; a panel discussion to discuss fire, the climate emergency, and community; a sustainability community fair; and a film screening of *To Kill a Tiger* on International Women's Day.





Image Description: Students fill the Surrey campus courtyard to explore the booths during the SDG Fair.



Image Description: The Office of Sustainability at the SDG Fair during SDG Week asking campus members, “How do you support the SDGs?”



Image Description For Other Images: SDG Week activities in March 2024.



Sustainability Research Showcase

The Office of Research Services held a showcase in March 2024, which focused on research and sustainability, including the UN SDGs, at KPU. This event illuminated achievements by KPU researchers and students towards a sustainable future. A keynote address was led by Dr. Garret-Petts of Thompson Rivers University, titled “Becoming a ‘Civic University’: Place-based Approaches for Sustainable Research Development and Engagement”. Following the address, faculty members and students gave presentations on their research, and audience members explored interactive booths. Presentations focused on a range of sustainability topics such as monitoring watershed toxicology, land stewardship practices, and place-based learning.



Image Description: KPU members discuss the “Green Justice Podcast” at the Sustainability Research Showcase in March, 2024.

Fostering a Culture of Sustainability

The Office of Sustainability and the Office of Planning and Accountability launched KPU’s first Sustainability Survey in February 2024. This survey aimed to assess the KPU community’s understanding of sustainability, including the role of sustainability in everyday decision-making; the use of specific services at KPU; and the community’s transportation choices to, from, and between campuses. A sustainability quiz was also administered to understand the level of awareness of sustainability topics at KPU and within Metro Vancouver, including climate change, responsible production and consumption, and society and economy. Below is an overview of survey responses, which are complemented by additional survey data throughout this Sustainability Report.¹³

¹³Some call-out boxes show data from the Survey that asked respondents the level at which they agree to a certain statement. The levels included “Strongly disagree”, “Somewhat disagree”, “Neither agree nor disagree”, “Somewhat agree”, and “Strongly agree”. Unless specified, agreement categories have been combined (e.g. “agreed” includes both “strongly agree” and “somewhat agree”).

Response Rate:
Employees – 24%
Students – 16%

Total Number of
Respondents:
475 employees
1,160 students

Average Sustainability Quiz
Score:
Employees – 78%
Students – 60%

86% of employees often
avoid purchasing bottled
water.

44% of students take the
bus as their most common
transportation method to
and from campus.

29% of employees and
32% of students often
make dietary choices for
sustainability reasons – e.g.
intentionally eating less
meat or following a plant-
based diet, purchasing
organic or Fair-Trade food.

35% of students often
deliberately avoid
purchasing an item because
it has negative social and/or
environmental impacts.

63% of employees know of
and use Grassroots Café, a
student-led café providing
healthy, local, organic, and
Fair-Trade food.

87% of employees and
76% of students often use
a reusable shopping bag,
avoid single-use utensils, or
bring their own reusable to-
go containers.

81% of employees and 57%
of students sometimes or
often go to local forests and
greenspaces for restorative
time or recreation.

71% of students know of and
use their U-Pass.

9% of students and 26% of
employees have participated
in a sustainability-related
event, group, project, or
committee at KPU.

82% of survey respondents
agree that engaging in
sustainability-related
behavior is important to
them.

32% of employees strongly
agree that they see a
connection between their
work and sustainability at
KPU.

28% of students strongly
agree that they see a
connection between their
studies and sustainability at
KPU.

Annual Sustainability Survey

70% of students and employees “...would like KPU to take more action on sustainability and climate change”.

Leadership & Governance

Sustainability Framework Performance Assessment	
SF 3.1.1	Campus Sustainability Implementation
SF 3.1.2	Leading by Example
SF 3.3.1	Utility Special Purpose Fund
SF 3.4.1	External Communication



The words, actions, and course charted by leadership are crucial in shaping the rules and norms of an organization. At KPU, commitment to sustainability at the highest levels, through VISION 2026 and the Sustainability Framework from KPU2050, helps set the tone for the community, encourages participation and collaboration, and provides a supportive environment for sustainable initiatives. This section is focused on capacity building, community empowerment, decision-making, and accountability.

	<i>I've read it and/or have used it in my work (%)</i>	<i>I've heard of it, but haven't read it (%)</i>	<i>I don't know about it all (%)</i>
The xé?elt framework – KPU Pathway to Systemic Transformation	26	24	49
KPU VISION 2026	55	33	11
KPU 2050 Official Campus Plan	32	41	26
KPU 2050 Sustainability Framework	22	43	35
Taskforce on Anti-racism Final Report and Recommendations	35	45	21
KPU Accessibility Plan	31	49	21

Table 6: Level of awareness amongst employees of strategic documents at KPU that uphold the values of and/or support sustainability. Data is from KPU's inaugural Sustainability Survey. Each row totals to approximately 100%.

Capacity Building: Establishing an Office of Sustainability

Since hiring sustainability staff in 2023, which led to the establishment of the Office of Sustainability within the Campus and Community Planning department, KPU has made strides towards more formally integrating sustainability across the university. The Office of Sustainability's role is to connect, coordinate, communicate, support, and foster collaboration to advance sustainability at KPU. The Office of Sustainability envisions sustainability at KPU as being celebrated and ubiquitous and embarks on a mission to improve KPU's relationship with the planet through its physical campuses, operations, academics, and governance, guided by KPU's Sustainability Framework. Sustainability is a shared responsibility of the entire university community; the Office of Sustainability is working to equip all community members to take meaningful action.



Photo Description: Members of the Campus and Community Planning Department, including the Office of Sustainability staff.

Connecting & Empowering: KPU's Sustainability Hub

In November 2023, the Office of Sustainability officially launched the Sustainability Hub (the “Hub”), a space where members of the campus community, including faculty, staff, administrators, and students, come together to collectively advance sustainability at KPU through dialogue, advocacy, and action. As both a virtual space and face-to-face advisory group, the Hub is comprised of two interconnected efforts: at-large meetings and smaller working groups, called “Sub-Hubs”, which focus on tangible, inspiring projects that can demonstrate sustainability in action within a polytechnic setting. Through a decentralized, decolonial, and inclusive structure, the Hub serves as a cornerstone for increased collaboration, empowering faculty, staff, administrators, and students to more effectively share information, identify gaps in sustainability efforts to guide current and future initiatives, and helping establish the networks of support that make this kind of work possible. The Hub is an important tool for helping KPU achieve its Sustainability Framework objectives.

We kept hearing from staff, faculty, and students that sustainability efforts at KPU felt disconnected and somewhat overlooked, or easy to miss. One of our key goals with the Hub was to connect the people doing all of this great sustainability work, to avoid duplicating efforts and to support each other in progressing our diverse sustainability initiatives. We've been thrilled to see this group come together and drive forward important projects that might otherwise have floundered, while learning about each other's initiatives and celebrating all of the excellent sustainability work being advanced by our KPU community.

– Chani Joseph – Co-Chair of the Sustainability Hub; Director of Planning, Development, and Sustainability (Campus and Community Planning Department)



Image(s) Description: Images from a Sustainability Hub quarterly meeting.



Image(s) Description: Images from a Sustainability Hub quarterly meeting.

Accountability

KPU recognizes the importance of transparency and accountability in making good on its commitment to sustainability. By auditing and publicly reporting on its sustainability performance across all domains, the university owns its actions and is accountable to the community. In addition to this inaugural Sustainability Report, KPU has examined its sustainability performance using two commonly accepted external frameworks applicable to the post-secondary context: the UN SDGs and STARS.

United Nations Sustainable Development Goals Mapping Project

KPU underwent a thorough mapping exercise to identify UN SDG-related practices at the university during the 2022-2023 academic year. Using a “whole-of-university” approach, this project engaged the university community to identify connections between the SDGs and KPU’s courses, programs, research, services, operations, and policies. By undertaking this mapping exercise, a series of recommendations were established to further embed the SDGs into KPU’s academics, policies, and operations.

This academic year (2023-2024), KPU made strides towards addressing many of the recommendations, including crafting a KPU-wide definition of sustainability; creating more teaching and learning resources for faculty to embed the SDGs into coursework; and establishing the cross-functional, cross-departmental Sustainability Hub.

Sustainability Tracking Assessment and Rating System (STARS)

This academic year, the Office of Sustainability submitted **KPU’s first report** to the Association for the Advancement of Sustainability in Higher Education’s Sustainability Tracking Assessment and Rating System (STARS) program. In June 2024, KPU received a Silver Rating for its sustainability performance. Engaging in this process has allowed KPU to establish a baseline of sustainability performance and track progress as strategic initiatives are implemented over time. The reporting process helped to inform this Sustainability Report and it will contribute to the future update of the Sustainability Framework.



Image Description: KPU was awarded the Colleges and Institutes Canada Silver Award of Excellence in April 2024, for its efforts in advancing the Sustainable Development Goals through the Mapping Project.

Conclusions

Key Takeaways

This first institution-wide Sustainability Report reflects KPU's ongoing efforts to address sustainability - one of KPU's top five priorities established through VISION 2026 - by showcasing recent progress and demonstrating how KPU is formalizing new initiatives. Despite current gaps in quantifiable metrics, recent data collection efforts through STARS and KPU's first Sustainability Survey (2024), as well as ongoing information sharing and collaboration across departments, are collectively helping to establish baselines and track progress over time.

This report serves as a tool for consolidating information, identifying trends, and informing future sustainability work at KPU. The processes that led to this Sustainability Report, as well as the evolution of sustainability practice within and outside of KPU, will inform future updates to KPU2050's Sustainability Framework. This reporting process helps identify which objectives need to be revised to be more measurable and specific, so that KPU can better track progress over time. Clearly tracking progress across KPU's diverse sustainability goals will help the university understand where additional resources may be needed to support greater progress. This iterative process ensures that KPU's sustainability efforts remain dynamic and responsive to evolving circumstances and best practices.

Looking Forward

KPU will only be able to advance its sustainability goals and commitments by creating a baseline from which to measure progress, reflect on areas for improvement, and implement actions to create the greatest impact. This allows KPU to uphold the values, goals, and intentions embedded within institution-wide documents such as VISION 2026 and the KPU2050 Official Campus Plan.

In today's social and cultural milieu, accountability and transparency are held in higher regard than ever before. This is especially the case with large organizations, such as universities, that are in a unique position of societal influence. By acknowledging responsibility for actions and decisions, KPU continues to build an accountable, reliable, and equitable institution that addresses societal demands and responds to contemporary sustainability crises.









Over the next year, KPU will continue to reflect on the lessons learned through this reporting process to better understand how to strategically advance sustainability across the institution.

Appendix 1



KPU's **Sustainability Framework** envisions a 2050 where sustainability is visible, celebrated, and ubiquitous across KPU's academics, governance, operations, and physical campuses. The framework outlines sub-goals and strategic recommendations, serving as a comprehensive plan to address ongoing sustainability challenges. As seen below in the progress assessment summary, this report provides a progress assessment against the sub-goals and strategic recommendations of the framework. Progress was evaluated at a high level using five benchmarks: "complete," "significant progress," "progress in the right direction," "unclear," and "no progress".

	Complete
	Significant progress
	Progress in right direction
	Unclear
	No progress

SF.3 Governance

	Strategic Recommendation	Performance Assessment
<i>Leadership</i>		
3.1.1	Campus Sustainability Implementation	
3.1.2	Leading by Example	
<i>Diversity, Equity, and Inclusion</i>		
3.2.1	President's Diversity and Equity Committee (PDEC) and Indigenous Advisory Committee (IAC) ³	
		
3.2.2	Diversity, Equity, and Truth and Reconciliation ⁴	
<i>Finance</i>		
3.3.1	Utility Special Purpose Fund	
<i>Communication</i>		
3.4.1	Internal Communication	
3.4.2	External Communication	

SF.4 Academics

	Strategic Recommendation	Performance Assessment
<i>Ongoing Engagement</i>		
4.1.1	Sustainability Literacy	
4.1.2	Student Life	

<i>Applied Learning</i>		
4.2.1	Applied Learning on Campus	
4.2.2	Indigenous Learning Opportunities	
4.2.3	Sustainability Grant	

SF.5 Physical Campus

	Strategic Recommendation	Performance Assessment
<i>Buildings, Energy, and Greenhouse Gas Emissions</i>		
5.1.1	Zero Emissions Commitment	
5.1.2	Phased Electrification of Existing Building Systems	
5.1.3	Embodied Emissions	
5.1.4	Sustainable Building Design Guidelines and Performance Rating Systems	
5.1.5	Renewable Energy	
5.1.6	Resilience	
<i>Mobility</i>		
5.2.1	On-campus Mobility and Accessibility	
5.2.2	Commuting To and Between Campuses	
<i>Water</i>		
5.3.1	Water Metering	
5.3.2	Building and Landscape Water Use Reduction	
<i>Ecosystem-based Landscapes</i>		
5.4.1	Ecosystem-based Landscapes	
5.4.2	Biodiversity and Biophilia	

SF.6 Operations

	Strategic Recommendation	Performance Assessment
<i>Waste</i>		
6.1.1	Waste Diversion and Reduction Tracking	
6.1.2	Paper Use Reduction	
6.1.3	Eliminate Single-Use Plastics or other Single-Use Items	
6.1.4	Waste Diversion Facilities and Strategies	
6.1.5	Training and Communication	
<i>Food Systems</i>		
6.2.1	Food Services Plan	
6.2.2	Food Production on Campus	
<i>Procurement</i>		
6.3.1	University-wide Sustainable Procurement Policies	
6.3.2	Affordability, Access, and People and Planet Friendly Foods	



KWANTLEN
POLYTECHNIC
UNIVERSITY

KPU Civic Plaza

13485 Central Ave
Surrey, BC

KPU Langley

20901 Langley Bypass
Langley, BC

KPU Richmond

8771 Lansdowne Rd
Richmond, BC

KPU Surrey

12666 72 Ave
Surrey, BC

KPU Tech

5500 180 St
Surrey, BC